

GE Energy
Industrial Solutions

Leading The Future Of Electrification



Low Voltage Switchgear

Buy Log

effective from 02nd January, 2012

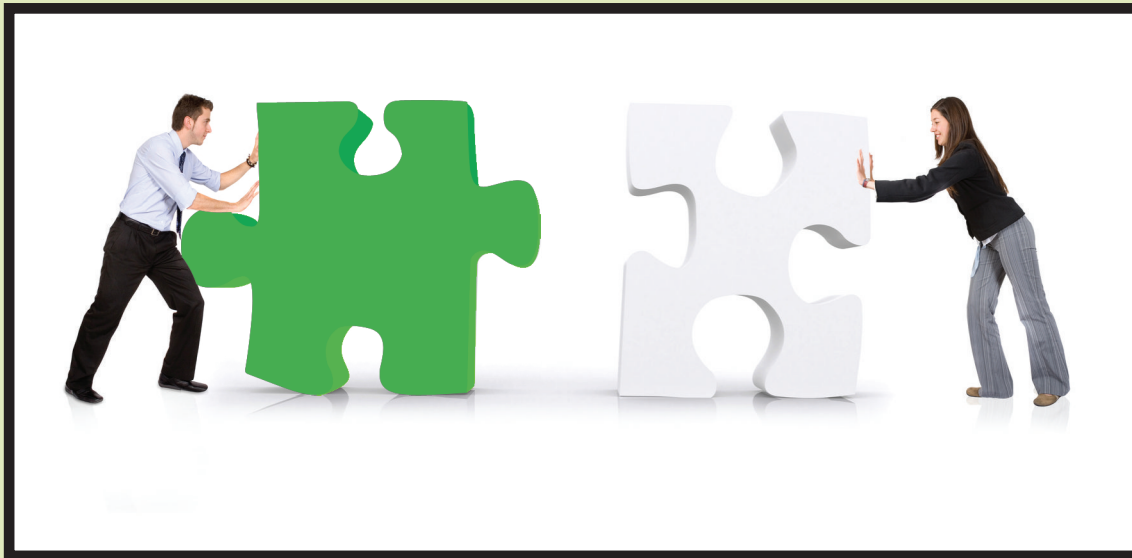


GE imagination at work

Solutions that make a difference

At GE Energy - Industrial Solutions, with an expanded focus on customer challenges, we are leading the future of electrification by committing to technologies that will help create cleaner, smarter and more efficient global electrical infrastructure.

We have a lot to offer right from products to services, changing the way people live and work. Our comprehensive and innovative solutions meet our customers' challenges in Power, Protection & Distribution, addressing diverse segments that include Core & Commercial Infrastructure, OEMs, Utilities or Industries.



Warranty Policy

Product manufactured by us are warranted against defects arising out of manufacturing processes or use of defective raw materials, for a period of 18 months from the date of supply or 12 months from the date of installation which ever is earlier. The company reserves the right to either replace or repair the defective items after ascertaining the facts through a detailed service report on usage of our products in normal conditions. The company reserves the right to take back the defective goods for carrying out study or inspection.

Warranty is not applicable if the products are found tampered with or subjected to calibration changes. The company's liability is limited to repair or replace the defective product only. The manufacturer shall not be liable for any consequential loss, injury or damages.

The warranty period for all products shall be as indicated above with the exceptions of MCB & Capacitors. The warranty period applicable for these products are as under:

- MCB: The warranty period for MCB is 3 years from the date of supply. The warranty extends when the MCBs are installed and used in GE made Distribution Boards.
- Capacitors: Type APP & Mixed Dielectric Capacitors are warranted for a period of 2 years from the date of supply.

Product improvement is a continuous process and technical details applicable for the products are only those mentioned on the product.

Any dispute arising in this regard shall be subjected to jurisdiction of courts in Bangalore, in the state of Karnataka, India.

All other warranty terms for MCB and Capacitors remain unchanged.

Prices mentioned in the buy log are for guidance purposes and the products may be sold at lower prices also. Goods are always sold subject to laws, rules and regulations relating to excise, customs and maximum retail price as applicable at the time of purchase and as printed on the goods.

Excise duty exempted on Guardline range

Index

Components Selection Chart	<ul style="list-style-type: none"> • Type II coordination - Fuseless system (MPCBs) 	A 1
Controlgear	<ul style="list-style-type: none"> • Auxiliary Contactors • Power Contactors • Thermal Overload Relay • Electronic Overload Relay • Variable Frequency Drives • Digital Soft Starters • Electronic Timers • MPCBs 	B 2-11
Switchgear	<ul style="list-style-type: none"> • Wall mounting type combination Fuse Switch Units • Wall mounting type Switch Fuse Units / Fuse Switch Units • Switch Disconnecter Fuse Units in open execution & in SS enclosures • On Load Changeover Switches 	C 12-16
Circuit Breakers	<ul style="list-style-type: none"> • Moulded Case Circuit Breakers • Air Circuit Breakers • Vacuum Circuit Breaker / MV Switchgear 	D 17-31
Residential Products	<ul style="list-style-type: none"> • Miniature Circuit Breakers, MCB Distribution Boards • Residual Current Circuit Breakers • Time Switches 	E 32-34
Busways	<ul style="list-style-type: none"> • Busway Systems • Accessories for Busways 	F 35-36
LV Capacitors	<ul style="list-style-type: none"> • APP Capacitors • Automatic Power Factor Correction Relay 	F 36

Part numbers listed are for internal purpose and are subjected to change.

▪ **Stock Items**



**Type 2 coordination with MPCBs -
DOL 415V (50kA)**

**Type 2 coordination with MPCBs -
Star Delta 415V (50kA)**

Motor Rating KW/HP	Line Current @415V (A)	Surion MPCB		Contactor		Motor Rating KW/HP	Line Current @415V (A)	Line Current @415V (A)	Surion MPCB		Contactor	
		Type	(A)	Type	Rating (A)				Type	(A)	Type	Rating (A)
0.55/0.75	1.5	GPS1BSAF	1.6	CL00	9	2.2/3	4.8	2.8	GPS1BSAJ	6.3	CL25	25
0.75/1	1.9	GPS1BSAG	2.0	CL00	9	3.7/5	7.7	4.5	GPS1BSAK	10	CL25	25
1.1/1.5	2.5	GPS1BSAH	4.0	CL00	9	5/5/7.5	11.6	6.7	GPS1BSAL	13	CL25	25
1.5/2	3.4	GPS1BSAH	4.0	CL25	25	7.5/10	14.4	8.4	GPS1BHAM	16	CL25	25
2.2/3	4.8	GPS1BSAJ	6.3	CL25	25	11/15	21.1	12.2	GPS1BHAP	25	CL25	25
3.7/5	7.7	GPS1BSAK	10	CL25	25	15/20	28	16.2	GPS2BHAR	32	CL04	32
5.5/7.5	11.6	GPS1BSAL	13	CL25	25	18.5/25	35	20.3	GPS2BHAS	40	CL04	32
7.5/10	14.4	GPS1BHAM	16	CL25	25	22/30	41	23.8	GPS2BHAT	50	CL06	50
11/15	21.1	GPS1BHAP	25	CL25	25	30/40	55	31.9	GPS2BHAU	63	CL06	50
15/20	28	GPS2BHAR	32	CL04	32	37/50	69	40	GPS3BHAV	100	CL08	80
18.5/25	35	GPS2BHAS	40	CL45	40	45/60	83	48.1	GPS3BHAW	200	CL09	95
22/30	41	GPS2BHAT	50	CL06	50	55/75	99	57.4	GPS3BHAW	200	CL10	105
30/40	55	GPS2BHAU	63	CL07	65	75/100	136	78.9	GPS3BHAW	200	CK75C	150
37/50	60	GPS3BHAV	100	CL10	105	90/125	162	94	GPS3BHAX	400	CK08C	185
45/60	83	GPS3BHAV	100	CL10	105	110/150	200	116	GPS3BHAX	400	CK09B	250
55/75	99	GPS3BHAW	200	CK75C	150	150/203	263	152.5	GPS3BHAX	400	CK95B	309
75/100	136	GPS3BHAW	200	CK75C	150	160/215	281	163	GPS3BHAX	400	CK95B	309
90/125	162	GPS3BHAW	200	CK08C	185	185/250	324	187.9	GPS3BHAX	400	CK10C	420
110/150	200	GPS3BHAX	400	CK09B	250							
132/180	231	GPS3BHAX	400	CK10C	420							
150/203	263	GPS3BHAX	400	CK10C	420							
160/215	281	GPS3BHAX	400	CK10C	420							
185/250	324	GPS3BHAX	400	CK10C	420							
200/270	354	GPS3BHAX	400	CK10C	420							

Notes: GPS3

1. The MPCB will trip only on short-circuits and on overloads, it gives a trip signal to the contactor through a NC contact from an in-built relay
2. The MPCB also gives the trip signal through NC contact from the in-built relay to the contactor for protection against single phasing and phase reversal

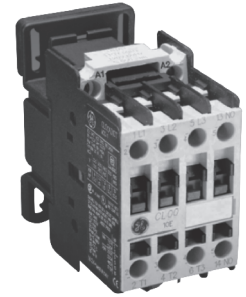


Auxiliary Contactors

- Series RL and its accessories
- Series M (Mini) and its accessories
- AC & DC control
- Contact Arrangement :
4NO, 3NO+1NC, 2NO+2NC, 4NC

Power Contactors

- Series CL 3P, AC 25A to 140A, AC3
- Series CK 3P, AC 250A to 1000A, AC3
- Series CL 3P, DC 12A to 110A, AC3
- Series CK 3P, DC 185A to 800A, AC3
- Series CL 4P, AC 25A to 200A, AC1
- Series CK 4P, AC 200A to 1250A, AC1
- Series CL 2NO + 2NC, AC, 110A
- Series CSC capacitor switching from 8KVAR to 73KVAR
- **Contactors for DC application - Available on request**

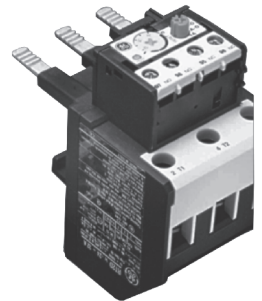


Accessories for Contactors

- Spares for contactors

Thermal Overload Relay

- Thermal overload protection against normal overloads
- Three pole differential protection (Three phase unbalance protection)
- Front mounted test button
- Trip indication
- Independent auxiliary contacts (1NO+1NC)
- Function selector manual / auto reset
- RT1 - Direct/separate mounted type Setting range 0.16A(min) - 40A(max)
- RT2 - Direct/separate mounted type Setting range 11.5A(min) - 110A(max)
- RT3 - Direct/separate mounted type Setting range 55A(min) - 190A(max)
- RT4 - Direct/separate mounted type Setting range 120A(min) - 310A(max)
- RT5 - separate mounted type Setting range 120A(min) - 700A(max)



Electronic Overload Relay

- Self powered type RE
- Setting range 0.1A(min)-150A(max)
- Thermal memory
- Greater accuracy
- Phase unbalance protection
- Multiple trip class selection
- Manual / auto reset
- Interchangeable with thermal overload relay



Motor Protection Circuit Breaker and Accessories

- Rocker and rotary handle operator
- Standard and high breaking capacity upto 100 kA
- Clear identification of the operation (ON-OFF tripped)

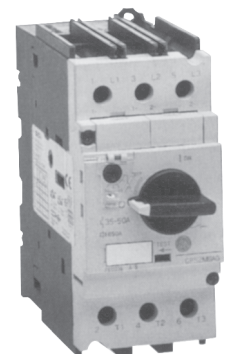
GPS1B and GPS2B with Thermal Magnetic and Phase Failure Protection, Trip Class 10 as per IEC60947

• GPS1B

1. Rated current I_n , AC3 (A) 0.1-32
2. Rated power at 400V AC (KW) 0.02-15
3. Overload release (Adjustable)
4. Magnetic release I_a max (A) x13

• GPS2B

1. Rated current I_n , AC3 (A) 10-63
2. Rated power at 400V AC (KW) 4-30
3. Overload release (Adjustable)
4. Magnetic release I_a max (A) x13



GPS1M and GPS2M with only Magnetic Protection

• GPS1M

1. Rated current I_n , AC3 (A) 0.1-32
2. Magnetic release I_a max (A) x13

• GPS2M

1. Rated current I_n , AC3 (A) 10-63
2. Magnetic release I_a max (A) x13

GPS3 Electronic MPCB

- Rated current I_n , AC (A) 50-400A



Variable Frequency Drives*

VAT20 - Micro AC variable speed drives

- Single-phase or three-phase digital inverters for controlling the speed of three-phase induction AC motors from 0.2 to 2.2kW
- Built-in keypad and display
- IP20 or IP65 protection degree
- Built-in EMC filter for industrial environment (class A)
- DIN rail mountable by optional kit
- Global standards CE and cUL



VAT200 - Mini AC variable speed drives

The VAT200 is a well performed, sensor less vector VSD for AC standard motors available in the following ranges:

- From 0.4 to 2.2 kW at 200V, single phase power supply
- From 0.4 to 7.5 kW at 200V, three phase power supply
- From 0.75 to 55 kW at 400V, three phase power supply



Advantages

- Compact size
- Built-in removable LED keypad
- Optional multi-language LCD keypad
- Sensorless vector control or V/f control, selectable
- Built-in with ModBus RTU communications
- Optional field bus communication DeviceNet, ProfibusDP
- Integrated EMC filters for U20...FS series
- Built-in with dynamic braking up to 15kW
- Performed with simple PLC and PID functions
- Easy start-up & tuning by PC or keypad
- Advanced programming and drive control by built-in PLC function

* For details, please contact our nearest sales office

VAT300 - Advanced Variable Speed Drives

Features

- The new drive, with smaller foot print than the former generation, covers the power ratings from 0.75kW to 475kW in normal duty, or up to 400kW in heavy duty.
- High starting torque up to 200% or more, can be achieved even using standard induction motors.
- VAT300 is able to drive, not only the standard induction motors, but also the new generation of permanent magnet motors. In both cases, sensorless or close loop control are available.
- As well as satisfying industry requirements, with its advanced and high performance functions, VAT300 is hailed a truly environmentally friendly drive with dedicated energy saving functions and careful selection of components to meet environmental directives.

Advantages

Multimode control - All in one single drive

- V/f control for constant torque loads and quadratic loads
- Vector control, both closed loop and sensorless
- PM motor control, both closed loop and sensorless
- **Dynamic braking built-in the drive up to 22kW**

Advanced features

- User programmable built-in PLC
- Configurable PID control
- Multi-pump control

Communications

- ModBus, ProfibusDP, DeviceNet, CANopen, CC-Link
- Dedicated version drive for lift application - VAT300L

Environmentally friendly design

- RoHS directive compliant
- High efficiency operation
- Dioxin-free plastic cases

Global design

- Meet global standards UL, cUL, CE
- Multi-language interface



*For details, please contact our nearest sales office

ASTAT XT *

Digital soft starters for 3Ph standard induction motors

GE's new ASTAT XT solid state soft starter features microprocessor control digital technology.

Setup and adjustment is performed through a six-button keypad and parameters or messages are displayed through a friendly LCD, multi-language interface with 2 rows, 16 alphanumeric characters each.

The design includes isolated I/O and high level of protection in the circuits to minimize the disturbance effects while working in the hardest industrial environment.

ASTAT XT soft starter offers reliable performance and smooth acceleration for a variety of standard AC motors up to 1400A and up to 690V, reducing mechanical shock to the driving system, resulting in extended component and motor life.

ASTAT XT offers many traditional features such as motor overload function, adjustable ramps, current limit, kick start, and other high end features like inside-delta operation, torque control, pump control and a reliable motor and unit set of protections.

Key Features

- Ratings up to 1400Amps and up to 690V AC
- Friendly multi-language interface with 2 rows, 16 characters each
- Built-in with three extra power terminals for external bypass
- In-Line or Inside-Delta operation modes
- Torque control and pump control advanced features
- Motor protection according IEC 10, 20 and NEMA 10, 20, 30, even if ASTAT XT is in bypass
- Built-in communications RS485 port, and ModBus protocol as standard
- Profibus-DP and DeviceNet optional interfaces for communications

* For details, please contact our nearest sales office



Auxiliary Contactors

Series RL- AC1 rating: 20A

AC - Control

Contacts Arrangement	Code Reference	Buy Log/ Unit
4NO	RL4RA040T ♦	925
3NO+1NC	RL4RA031T ♦	925
2NO+2NC	RL4RA022T ♦	925
4NC	RL4RA004T ♦	925

DC - Control

4NO	RL4RD040T ♦	1350
3NO+1NC	RL4RD031T ♦	1350
2NO+2NC	RL4RD022T ♦	1350
4NC	RL4RD004T ♦	1350

Series M (Mini) - AC1 rating: 16A

AC - Control

Contacts Arrangement	Code Reference	Buy Log/ Unit
4NO	MCRA040AT ♦	930
3NO+1NC	MCRA031AT ♦	930
2NO+2NC	MCRA022AT ♦	930
1NO+3NC	MCRA013AT ♦	930
4NC	MCRA004AT ♦	930

DC - Control

4NO	MCRC040AT ♦	1375
3NO+1NC	MCRC031AT ♦	1375
2NO+2NC	MCRC022AT ♦	1375

Table 1. Coil Voltage Codes - AC/DC

♦	D	G	J	N	U	W*
AC/50Hz	24	48	110	220/230	380	415
DC	24	48	110	220	-	-

*Note: In case of electronic coil module, please suffix 'U' for 380 / 415V.

Table 2. Wide Band Coil Voltage AC

♦	1	2	3	5	7	13	8
AC50/60Hz	24	42	110V	220	240V	400V	440V

Notes:

- To complete the ordering code reference replace the symbol (♦) with the code corresponding to the voltage, given in table 1 & 2
- For other coil voltages, please contact our nearest sales office

Power Contactors

Series CL - 3 Pole, AC Control

AC1 Rating	AC3 Normal Life	AC3 Long Life	AC3-Long Life Max. 3Phase Motor Output at 415V AC		Aux. Contact Arrangement		Code Reference	Buy Log/ Unit
			KW	HP	NO	NC		
Amps	Amps	Amps						
25	12	9	4	5.5	1	0	CL00A310T ♦	740 ▫
25	12	9	4	5.5	0	1	CL00A301T ♦	740 ▫
25	18	12	5.5	7.5	1	0	CL01A310T ♦	835 ▫
25	18	12	5.5	7.5	0	1	CL01A301T ♦	835 ▫
32	25	18	7.5	10	1	0	CL02A310T ♦	930 ▫
32	25	18	7.5	10	0	1	CL02A301T ♦	930 ▫
45	32	25	11	15	1	0	CL25A310T ♦	1315 ▫
45	32	25	11	15	0	1	CL25A301T ♦	1315 ▫
60	40	32	16	20	1	0	CL04A310M ♦	2625 ▫
60	40	32	16	20	0	1	CL04A301M ♦	2625 ▫
60	50	40	22	30	1	1	CL45A311M ♦	3925 ▫
90	65	50	25	35	1	1	CL06A311M ♦	4900 ▫
110	80	65	37	50	1	1	CL07A311M ♦	6600 ▫
110	95	80	45	60	1	1	CL08A311M ♦	8560 ▫
140	105	95	50	68	1	1	CL09A311M ♦	9975 ▫
140	110	105	55	75	1	1	CL10A311M ♦	11335 ▫
160	130	125	65	85	1	1	CL12A311M ♦	15150 ▫
200	140	130	70	95	1	1	CL13A311M ♦	15645 ▫

Series CK - 3 Pole, AC Control

AC1 Rating	AC3 Normal Life	AC3 Long Life	Max. 3Phase Motor Output at 415V AC		Aux. Contact Arrangement		Code Reference	Buy Log/ Unit
			KW	HP	NO	NC		
Amps	Amps	Amps						
250	185	150	80	110	1	1	CK75CA311 ♦	15960 ▫
250	205	185	100	135	1	1	CK08CA311 ♦	21200 ▫
315	250	205	125	170	1	1	CK85BA311 ♦	23000 ▫
315	300	250	132	180	1	1	CK09BE311 ♦	24400 ▫
450	400	309	160	220	1	1	CK95BE311 ♦	33500 ▫
600	475	420	230	315	1	1	CK10CE311 ♦	41900 ▫
700	630	550	315	430	1	1	CK11CE311 ♦	58800 ▫
1000	800	700	400	545	1	1	CK12BE311 ♦	104000 ▫
1250	1000	825	450	610	1	1	CK13BA311 ♦	171000 ▫

Notes:

- Special application contactors for steel plants available on request
- Please contact our nearest sales office



Power Contactors

Series CL - 3 Pole, DC Control

AC3 Rating Normal Life	AC3 Rating Long Life	Long Life Max. 3 Phase Motor Output at 415V AC		Aux. Cont Arrangement		Code Reference	Buy Log/ Unit
		KW	HP	NO	NC		
Amps	Amps						
12	9	4	5.5	1	0	CL00D310T ♦	1150
18	12	5.5	7.5	1	0	CL01D310T ♦	1250
25	18	7.5	10	1	0	CL02D310T ♦	1450
32	25	11	15	1	0	CL25D310T ♦	2540
32	25	11	15	1	0	CL03D310M ♦	3700
40	32	16	20	1	0	CL04D310M ♦	4150
50	40	22	30	1	1	CL45D311M ♦	4900
65	50	25	35	1	1	CL06E311M ♦	7200
80	65	37	50	1	1	CL07E311M ♦	8100
95	80	45	60	1	1	CL08E311M ♦	10500
105	95	50	68	1	1	CL09E311M ♦	11900
110	105	55	75	1	1	CL10E311M ♦	13755

Series CL - 4 Pole, AC Control

AC1 Rating at 415V	Admissible Power AC1	Aux. Cont Arrangement		Code Reference	Buy Log/ Unit
		NO	NC		
Amps	KW				
25	18	0	0	CL01A400T ♦	1090 ■
32	23	0	0	CL02A400T ♦	1310 ■
40	25	0	0	GCL25A400T ♦	1980 ■
45	32	0	0	CL03A400M ♦	2500 ■
60	43	0	0	CL04A400M ♦	4200 ■
90	57	0	0	CL05A400M ♦	7000
110	79	0	0	CL07A400M ♦	9000
140	100	0	0	CL09A400M ♦	14000
160	110	0	0	CL12A400M ♦	14500
200	143	0	0	CL13A400M ♦	16800

Series CK - 3 Pole, DC Control

AC3 Rating Normal Life	AC3 Rating Long Life	Long Life Max. 3 Phase Motor Output at 415V AC		Aux. Cont Arrangement		Code Reference	Buy Log/ Unit
		KW	HP	NO	NC		
Amps	Amps						
185	150	80	110	1	1	CK75CE311 ♦	18400
205	185	100	135	1	1	CK08CE311 ♦	23200
250	205	125	170	1	1	CK85BE311 ♦	24000
300*	250	132	180	1	1	CK09BE311 ♦	24400
400*	309	160	220	1	1	CK95BE311 ♦	33500
475*	420	230	315	1	1	CK10CE311 ♦	41900
630*	550	315	430	1	1	CK11CE311 ♦	58800
800*	700	400	545	1	1	CK12BE311 ♦	104000

Series CK - 4 Pole, AC Control

AC1 Rating at 415V	Admissible Power AC1	Aux. Cont Arrangement		Code Reference	Buy Log/ Unit
		NO	NC		
Amps	KW				
200	143	1	1	CK07BA411 ♦	19800
325	233	1	1	CK08BA411 ♦	32500
400	287	1	1	CK09BE411 ♦	42000
500	359	1	1	CK95BE411 ♦	50000
600	431	1	1	CK10CE411 ♦	64900
700	503	1	1	CK11CE411 ♦	70000
1000	719	1	1	CK12BE411 ♦	110000
1250	898	1	1	CK13BA411 ♦	250000

* This CK range fitted with electronic module can be used both for AC and DC control



Capacitor Switching Contactors

Series CSC-3 Pole, AC Control

I _{th} Current Amps	kVAR Rating at 415V AC	Aux. Cont Arrangement		Code Reference	Buy Log/ Unit
		NO	NC		
Amps	kVAR				
25	8	1	1	CSC08A311 ♦	1890
25	13	1	1	CSC12A311 ♦	2050 ■
32	17	1	1	CSC16A311 ♦	2700
45	21	1	1	CSC20A321 ♦	3150
45	26	2	1	CSC25A321 ♦	3450 ■
60	31	2	1	CSC30A321 ♦	6600
90	47	1	1	CSC45A311 ♦	9600
110	57	1	1	CSC55A311 ♦	9900
140	73	1	1	CSC70A311 ♦	14900

Series CL - 4 Pole, AC Control with 2NO+2NC Main Contacts (Without Aux. Contacts)

Rating AC1 at 415V	Admissible Power AC3	Main Contact Arrangement		Code Reference	Buy Log/ Unit
		NO	NC		
Amps	KW				
25	5.5	2	2	CL01AB00T ♦	1300
32	7.5	2	2	CL02AB00T ♦	1725
45	12	2	2	CL03AB00M ♦	4000
60	16	2	2	CL04AB00M ♦	5800
90	22	2	2	CL05AB00M ♦	8900
110	37	2	2	CL07AB00M ♦	10000
110	45	2	2	CL08AB00M ♦	10500

Notes:

- To complete the ordering code reference replace the symbol (♦) by the code corresponding to the voltage, given in table 1 & 2, Page B7
- For other coil voltages, please contact our nearest sales office
- All current ratings are at 415V AC, 50HZ



Accessories for RL/CL/CK Contactors

Pneumatic Timer Block

For use with	Mounting	Type	Contact Arrangements	Time	Code Reference	Buy Log/Unit
RL4R.. CL00.. CL13	Frontal	Delayed ON	1NO+1NC	0.1..30S	BTLF30C	1675
	Frontal	Delayed OFF	1NO+1NC	1..60S	BTLF60C	
1NO+1NC			0.1..30S	BTLF30D		
1NO+1NC	1..60S	BTLF60D				

Mechanical Latch Blocks

For use with	Code Reference	Buy Log/Unit
RL4R..,CL00..,CL13	RMLF♦	2150

Accessories for RL/CL/CK Contactors

Mechanical Interlock

For use with	Mounting	Code Reference	Buy Log/Unit
RL4R..,CL00..,CL13	Side	BELA	400
	Side	BELA02*	1000
CK07..,CK12B	Side	BEKH	2100
CK75C..,CK95B	Vertical	BEKVS	7900
CK10..,CK11..,CK13	Vertical	BEKVA	8500
CK13..	Vertical	BEKV	16500

*Also with in-built 2NC contacts for electrical interlock

Transient Voltage Suppressor Block

Directly connected parallel to the coil terminals A1-A2

Control Circuit	For use with	Type	Ue	Code Reference	Buy Log/Unit
AC	RL4R CL00..,CL45	R/C	12V to 48V	BSLR2G	460
			50V to 127V	BSLR2K	460
			130V to 250V	BSLR2R	460
AC/DC	CL00..,CL13 RL4R	Varistor	24V to 48V	BSLV3G	480
			50V to 127V	BSLV3K	480
			130V to 250V	BSLV3R	480
			277V to 500V	BSLV3U	480

Electronic Timer Module

For use with	Control Circuit	Type	Time	Code Reference	Buy Log/Unit
RL4R.. CL00..,CL13	24-250V AC/DC	Delayed ON	0.1...2S	BETL02C	2500
			1.5..45S	BETL45C	2500
		Delayed OFF	0.1...2S	BETL02D	2500
			1..60S	BETL45D	2500

Mechanical Interlock

Kit comprising mechanical interlock and contactor joining parts

For use with	Type	Contact Arrangement	Code Reference	Buy Log/Unit
MCR..,MCO..,MC1	Mechanical	Nil	MMHO	400

Accessories for RL/CL/CK Contactors

Instantaneous and Timed Auxiliary Contact Block

For use with	Mounting	Contact Arrangement	Type	Code Reference	Buy Log/Unit
RL4R CL00..,CL13	Front	1NO	Instantaneous	BCLF10	110 ■
		1NC	Instantaneous	BCLF01	110 ■
		1NO	Make early	BCLF10G ⁽³⁾	210
		1NC	Break late	BCLF01G ⁽³⁾	210
RL 4R.. CL00..,CL13 CK75..,CK13	Side ⁽¹⁾	1NO+1NC	Instantaneous	BCLL11	400
		2NO	Instantaneous	BCLL20	400 ■
	Side ⁽²⁾	1NO+1NC	Instantaneous	BRLL11	400
		2NO	Instantaneous	BRLL20	400

(1) First side mounted block

(2) Second side mounted block

(3) BCLF10G and BCLF01G are 'Make Before' (NO) and 'Break After' (NC) auxiliary contacts

Notes:

1. Maximum number of auxiliary contacts is:

- Four for RL4R, CL00 to CL25
- Six for CL03 to CL13
- Eight for CL06 to CL13
- Eight for CK75 to CK13

Accessories for Series M Contactors

Instantaneous Auxiliary Contact Block

For use with	Mounting	Number of Contacts	Contact Arrangement		Code Reference	Buy Log/Unit
			NO	NC		
MCRA.. MCRC.. MCOA.. MC1A.. MCOO.. MC1C..	Front	2	2	0	MARN220AT	380
		2	1	1	MARN211AT	380
		2	0	2	MARN202AT	380
		4	4	0	MARN440AT	440
		4	3	1	MARN431AT	440
		4	2	2	MARN422AT	440
		4	1	3	MARN413AT	440
4	0	4	MARN404AT	440		

Electronic Timer Block

For use with	Control Circuit	Type	Time	Code Reference	Buy Log/Unit
MCR.. MCO.. MC	24-250V AC/DC	Delayed ON	0.5-60S	MREBC10AC2	1950
		Delayed OFF	0.2-24S	MREBE20AC2	2500

Transient Voltage Suppressor Block

Directly connected parallel to the coil terminals A1-A2

For use with	Control Circuit	Type	Ue	Code Reference	Buy Log/Unit
MCRA..	AC	R/C	12V to 60V	MPOAAE1	460
MCOA..,MC1A			110V to 240V	MPOAAE2	460
MCRA.. MCOO..,MC1C	D C	Varistor	6V to 250V DC	MPOCAE3♦	460

Notes:

1. To complete the ordering code ref. replace the symbol (♦) by the code corresponding to the voltage, given in table 1 & 2, Page B7



Spares for the Air Break Contactors

Contact Kits

For use with	No. of Sets (1)	Type	Code Reference	Buy Log/ Unit
CL00	3	NO	V31200B	480
CL01	3	NO	V31201B	590
CL02	3	NO	V31202B	660
CL25	3	NO	V31225B	720
CL04	3	NO	V31204B	1100
CL45	3	NO	V31245B	2585
CL06	3	NO	V31206B	3000
CL07	3	NO	V31207B	3700
CL08	3	NO	V31208B	4900
CL09	3	NO	V31209B	6100
CL10	3	NO	V31210B	6900
CL12	3	NO	V41200B	7900
CL13	3	NO	V41201B	9100
CK07B..	1	NO	V1107BA	3000
CK75C..	1	NO	V1175CA	3300
CK08C..	1	NO	V1108CA	3750
CK08B..	1	NO	V1108B4	4150
CK85B..	1	NO	V1185BA	4300
CK09B..	1	NO	V1109BA	5200
CK95B..	1	NO	V1195BA	6150
CK10C..	1	NO	V1110CE	8150
CK11C..	1	NO	V1111CE	9950
CK12B..	1	NO	V1112BA	17700
CK13B..	1	NO	V1113BA	26400

Notes:

- One set consists of 2 fixed contacts, one moving contact and accessory parts

Spare Coils - Pure DC

For use with	Code Reference	Buy Log/ Unit
MCRC..,MCOC..,MC1C	MBOC ♦	720
RL4RD..,CL00D to CL25D	LB1D ♦	1150
CL03D.. to CL45D	LB3D ♦	2050
CL06..to CL10EL	LB4E ♦	4300

Spare Coils - AC & AC/DC

For use with	Control	Type Circuit	Code Reference	Buy Log/ Unit
MCRA.. (Mini)	AC	Coil	MB0A ♦	490
RL46..,CL00A to CL25A				
CSC12A.. to CSC25A	AC	Coil	LB1A ♦	535
CL03A.. to CL45A..,CSC30A	AC	Coil	LB3A ♦	1300
CL06A.. to CL13A.., CSC45A to CSC70A	AC	Coil	LB4A ♦	1800
CK75CA3.. to CK08CA3	AC	Coil	C12168 ♦	3000
CK75CE3.., CK08CE3..	AC/DC	Coil	KB4E ♦	3000
		Electronic Module	KM4E ♦	5500
CK85BA3..,CK07BA4	AC	Coil	C04255 ♦	3300
CK08BA4	AC	Coil	C04787 ♦	4150
CK85BE3..,CK09BE3.., CK95BE3	AC/DC	Coil	KB5E ♦	5500
		Electronic Module	KM5E ♦	6900
CK10CE3..,CK11CE3, CK10CE4.. CK11CE4..	AC/DC	Coil	KB7E ♦	8400
		Electronic Module	KM7E ♦	6900
CK12BE3..,CK09BE4.., CK95BE4	AC/DC	Coil	KB6E ♦	10400
		Electronic Module	KM6E ♦	6900
CK13BA3	AC	Coil	C08998 ♦	35500

Notes:

- To complete the ordering code reference replace the symbol (♦) by the code corresponding to the voltage, given in table 1 & 2, Page B7
- Coils KB4E, KB5E, KB6E, KB7E to be used with electronic module type KM4E, KM5E, KM6E, KM7E respectively
- For other coil voltages, please contact our nearest sales office



Thermal Overload Relays

Series RT1

For use with	Setting Range		Code Reference	Buy Log/ Unit
	A (Min)	A (Max)		
CL00. to CL45	0.16	0.26	RT1B	995
	0.25	0.41	RT1C	995
	0.4	0.65	RT1D	995
	0.65	1.1	RT1F	995 ■
	1.0	1.5	RT1G	995 ■
	1.3	1.9	RT1H	995 ■
	1.8	2.7	RT1J	995 ■
	2.5	4.0	RT1K	995 ■
	4.0	6.3	RT1L	995 ■
	5.5	8.5	RT1M	995 ■
	8.0	12	RT1N	995 ■
	10.0	16	RT1P	1190 ■
	14.5	18	RT1S	1600 ■
	17.5	22	RT1T	1600 ■
	21.0	26	RT1U	1600 ■
25.0	32	RT1V	1950 ■	
30.0	40	RT1W	1950 ■	

Series RT2

CL06., to CL13.,	11.5	15	RT2A	2400
	14.5	19	RT2B	2400
	18.5	25	RT2C	2400
	24.0	32	RT2D	2400
	30.0	43	RT2E	2400 ■
	42.0	55	RT2G	2400
	54.0	65	RT2H	3600
	64.0	82	RT2J	3600
	78.0	97	RT2L	3600
	90.0	110	RT2M	3600

Series RT3

For use with	Setting Range		Code Reference	Buy Log/ Unit
	A (Min)	A (Max)		
CK75.,CK08	55	80	RT3B	5000
	63	90	RT3C	5000
	90	120	RT3D	5000
	110	140	RT3E	5000
	140	190	RT3F	5000

Series RT4

CK85.,CK09 CK95	120	190	RT4N	7600
	175	280	RT4P	7600
	200	310	RT4R	7600

Series RT5

CK10-CK12	120	190	RT5A	8000
	175	280	RT5B	8000
	250	400	RT5C	9900
	315	500	RT5D	9900
	430	700	RT5E	9900

NEW

RE Electronic Overload Relays

For use with	Setting Range		Code Reference	Buy Log/ Unit
	A (Min)	A (Max)		
CL00.. CL45 (Sold in pack of 5)	0.1	0.5	RE1D	4000
	0.4	2.0	RE1H	4000
	1.0	5.0	RE1K	4000
	1.6	8.0	RE1M	4000
	6.4	32	RE1S	4000
	9.0	45	RE1W	4000
CL05... CL10	15	75	RE2H	6000
	22	110	RE2M	6000
CK75.. CK08	30	150	RE3E	8500

Accessories

Description	Code Reference	Buy Log/ Unit
Separate mounting base for RT1 Relays	RTXP	325 ■
Separate mounting base for RT2 Relays	RT2XP	525
Setting range cover protection for RT range	RTX3	220
Remote reset kit for RT range (cable length 0.5 mtr.)	RTXS	1500
Remote reset kit for RT range (cable length 1 mtr.)	RTXSL	2300
Remote electrical reset kit for RT range	RTXRRB	1900
Separate mounting kit for RE1	RE1XP	380
Separate mounting kit for RE2	RE2XP	780

Electronic Timers

Star Delta Timers

Description	Code Reference	Buy Log/ Unit
0 - 30 secs, 230V AC, 2 C/O	HSDT2CON	1220 ■
0 - 30 secs, 415V AC, 2 C/O	HSDT2COW	1220 ■

On Delay Timer

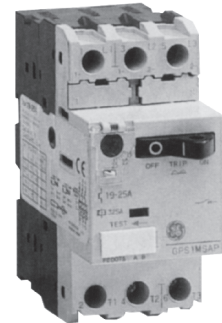
Descriptio	Code Reference	Buy Log/ Unit
Multirange / Multivoltage timer, 2 C/O-3Secs/30Secs 3 mins / 30 mins, 24V to 240V AC/DC	HODT2COZ	1425 ■



Surion MPCB Standard Offer

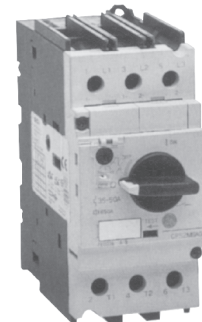
Frame 1

Rating	Std. Thermomagnetic		Rating	High Performance Thermomagnetic	
	Code Reference	Buy Log/ Unit		Code Reference	Buy Log/ Unit
0.1-0.16,100kA	GPS1BSAA	2190	0.1-0.16,100kA	GPS1BHAA	2800
0.16-0.25A,100kA	GPS1BSAB	2190	0.16-0.25A100kA	GPS1BHAB	2800
0.25-0.4A,100kA	GPS1BSAC	2190	0.25-0.4A,100kA	GPS1BHAC	2800
0.4-0.63A,100kA	GPS1BSAD	2490	0.4-0.63A,100kA	GPS1BHAD	2850
0.63-1A,100kA	GPS1BSAE	2490	0.63-1A,100kA	GPS1BHA E	2950
1-1.6A,100kA	GPS1BSAF	2490	1-1.6A,100kA	GPS1BHAF	2950
1.6-2.5A,100kA	GPS1BSAG	2490	1.6-2.5A,100kA	GPS1BHAG	3100
2.5-4A,100kA	GPS1BSAH	2490	2.5-4A,100kA	GPS1BHAH	3100
4-6.3A,100kA	GPS1BSAJ	2490	4-6.3A,100kA	GPS1BHAJ	3100
6.3-10A,100kA	GPS1BSAK	2575	6.3-10A,100kA	GPS1BHAK	3300
9-13A,50kA	GPS1BSAL	2850	9-13A,100kA	GPS1BHAL	3600
11-16A,25kA	GPS1BSAM	2975	11-16A,50kA	GPS1BHAM	3650
14-20A,25kA	GPS1BSAN	3450	14-20A,50kA	GPS1BHAN	4000
19-25A,25kA	GPS1BSAP	3500	19-25A,50kA	GPS1BHAP	4150
25-32A,25kA	GPS1BSAR	6250	25-32A,50kA	GPS1BHAR	6600



Frame 2

Rating	Std. Thermomagnetic		Rating	High Performance Thermomagnetic	
	Code Reference	Buy Log/ Unit		Code Reference	Buy Log/ Unit
6.3-10A,100kA	GPS2BSAK	4095	6.3-10A,100kA	GPS2BHAK	5800
9-13A,50kA	GPS2BSAL	4095	9-13A,100kA	GPS2BHAL	5800
11-16A,25kA	GPS2BSAM	4095	11-16A,50kA	GPS2BHAM	5800
14-20A,25kA	GPS2BSAN	4550	14-20A,50kA	GPS2BHAN	6350
19-25A,25kA	GPS2BSAP	5650	19-25A,50kA	GPS2BHAP	6450
24-32A,25kA	GPS2BSAR	6900	24-32A,50kA	GPS2BHAR	7400
28-40A,25kA	GPS2BSAS	7700	28-40A,50kA	GPS2BHAS	8200
35-50A,25kA	GPS2BSAT	9100	35-50A,50kA	GPS2BHAT	9900
45-63A,25kA	GPS2BSAU	10400	45-63A,50kA	GPS2BHAU	11000



Accessories

Description	Code Reference	Buy Log/ Unit
Door drive operator IP55 (GPS1 H)	GPA1HAB	1150
Door drive operator IP55 (GPS2)	GPA2HAB	1150
Front auxiliary block 1NO/1NC x GPS 1/GPS2	GPAC10FBA	525
Side contact block left 1NO+1NC GPS1/GPS2	GPACXLLA	550
Side contact block right 1NO+1NC GPS1/GPS2	GPACXLRA	550
Alarm contact block frontal 1NO GPS1/GPS2	GPALXXFRA	550
Side aux. cont. block alarm + aux. GPS1/GPS2	GPADXXYYLL*	700
Shunt trip (right) GPS1/GPS2	GPASLRAA*	1350
Undervoltage relay (right) GPS1/GPS2	GPASLRAA*	1350
Enclosure (extern). IP41 + acces. x GPS1*S surface mounting	GPES41A	900
Enclosure (extern). IP55 + acces. x GPS1*S surface mounting	GPEES5A	1050
Enclosure (inside). IP41 + acces. x GPS1*S flush mounting	GPEF41A	900
Enclosure (inside) IP55 + acces. x GPS1*S flush mounting	GPEF55A	1050

Notes:

- For other accessories viz. lug busbar, 3 pole bar, conversion kit, etc., please contact our nearest sales office
- *Please mention coil code: J-110V AC, N-220V AC, W-415 to 440V AC XXX & YY contact combination, 10-NO, 01-NC, 20-2NO



Frame 3*

(With continuously adjustable overload and short circuit motor protection)

Rating (Amp)	Standard Performance		Rating (Amp)	High Performance	
	Code Reference	Buy Log/Unit		Code Reference	Buy Log/Unit
50, 35kA	GPS3BSAT	15500	50, 50kA	GPS3BHAT	18500
100, 35kA	GPS3BSAV	15500	100, 50kA	GPS3BHAV	18500
200, 35kA	GPS3BSAW	25300	200, 50kA	GPS3BHAW	26000
400, 35kA	GPS3BSAX	31000	400, 50kA	GPS3BHAX	33000

***Built in protection**

- Overload protection eliminates need of external bimetal relay
- Overload, single phasing and phase reversal sensing through static release, motor feeder operating through contactor enhances MPCB's Life

Accessories GPS3

Description	Buy Log/ Unit
Door drive operator IP54 GPS3 (upto 100A)	1260
Door drive operator IP54 GPS3 (200A)	1400
Door drive operator IP54 GPS3 (400A)	1600
Auxiliary Contact Block 1NO	300
Auxiliary Contact Block 1NC	300
Shunt trip 220V **	1750
Undervoltage 220V **	1950

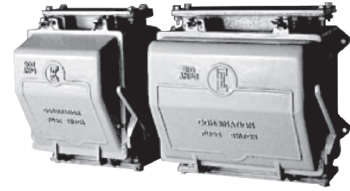
** For any other voltage and CAT number, please contact our nearest sales office



Wall Mounting & Panel Mounting Units

Wall Mounting Type Combination Fuse Switch Unit

- Type CH in cast iron enclosures from 63A to 315A
- Type CHD in sheet steel enclosures from 400A to 800A
- Both CH and CHD available in 3 pole & 4 pole versions



Wall Mounting Type - Switch Fuse Unit

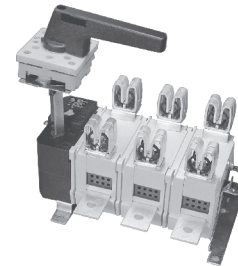
- Sheet steel clad switch fuse unit type LP - 32A & 63A TP & N version with SM fuse holders. These units have side operating handles



Panel Mounting Type Switch Disconnecter Fuse Units / Fuse Switch Disconnecter Units

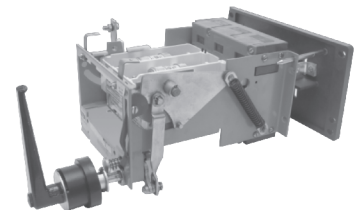
Type SP and Spectra SP SDFUs

- Conforms to IS13947-3-1993
- Range 32A to 800A, AC23A duty
- Switch disconnectors and switch disconnector fuse units available in TP, TPN and 4 pole version
- Compact dimensions
- Different configuration to accommodate BS, DIN and clip-on fuselinks
- Accessories - Auxiliary switches
- Door Drive - FD kits complete with door interlock, defeat and pad locking facility



Type CMM FSDUs

- Reference IS13947-3-1993
- 125A to 800A (AC23A) in 2 basic frame sizes
- Highest current carrying capacity in their class
- The units have draw-out fuse carriage
- Lowest down time required during fuse failure and maintenance
- Ideal solution for process industries, where down time is very critical
- Fixed and totally draw out type configuration
- Robust and sturdy construction - Best suited for Indian conditions
- FSDUs with maintainable contact system available as spare



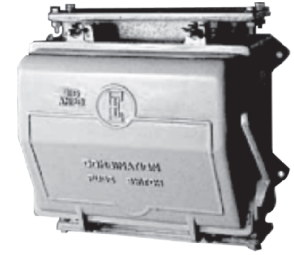
Type SPCO Onload Changeover Switches

- Conforms to IS13947-3
- 4 pole
- Rating 63A to 3150A



Wall Mounting Type Combination Fuse Switch Unit Type CH: Cast Iron Enclosure TPN

Rating		List No.	Code Reference	Buy Log/Unit (With type TS Fuselinks)	Recommended Fuselinks Bolted Type (Type/Size)
Volt	Amp				
415V AC	63	CH633N(U)	PGH8156102	10600	A2
	100	CH1003N(U)	PGH8160102	16650	A4 / A2
	200	CH2003N(U)	PGH8166102	22250	B1 / B3
	315	CH3153N(U)	PGH8170102	30000	B1 / B3



Type CH: Four Pole Fuse Switch Units in Cast Iron Enclosure

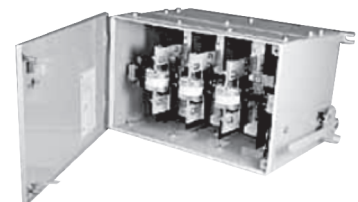
Rating		List No.	Code Reference	Buy Log/Unit (With type TS Fuselinks)	Recommended Fuselinks Bolted Type (Type/Size)
Volt	Amp				
415V AC	100	CH1004P	PGH8160142	22050	A4 / A2
	200	CH2004P	PGH8166142	30600	B1 / B3
	315	CH3004P	PGH8170142	41700	B1 / B3

Type CH: Four Pole Fuse Switch Units in Sheet Steel Enclosure

Rating		List No.	Code Reference	Buy Log/Unit (With type TS Fuselinks)	Recommended Fuselinks Bolted Type (Type/Size)
Volt	Amp				
415V AC	500	CH5004P	PGH8174142	85500	C1 / C2
	750	CH7504P	PGH8177142	105700	C1 / C2 / C3

Type CHD: Sheet Steel Enclosure TPN

Rating		List No.	Code Reference	Buy Log/Unit (With type TS Fuselinks)	Recommended Fuselinks Bolted Type (Type/Size)
Volt	Amp				
415V AC	400	CHD400	PGH8172102	35650	C3
	500	CHD500	PGH8174102	54450	C3
	630	CHD630	PGH8176102	59000	C3
	800	CHD800	PGH8178102	73900	C3
	800	CHD800*	PGH9101003	49900	C3



* Chasis without fuses

Wall Mounting Type Switch Fuse Units

Type LP: TPN Switch Fuse Units in Sheet Steel Enclosure

Rating		List No.	Code Reference	Buy Log/Unit (With type TS Fuselinks)	Recommended Fuselinks Bolted Type (Type/Size)
Volt	Amp				
415V AC	32	LP303N	SGG8150202	6320 ■	A2
	63	LP603N	SGG8156202	7800 ■	A2

Spares for LP/CH/CHD Units

Rating		List No.	TP Moving Contact Assembly		TP Shrouded Base Assembly	
Volt	Amp		Code Reference	Buy Log/Unit	Code Reference	Buy Log/Unit
415V AC	32	LP303N	SGG9000001	1150	SGG9000003	2050
	63	LP603N	SGG9000001	1150	SGG9000004	2300
	63	CH633(U)	PGH9000001	3900	PGH9000012	4450
	100	CH1003(U)	PGH9000002	5000	PGH9000013	6250
	200	CH2003(U)	PGH9000003	6050	PGH9000014	9200
	315	CH3153N(U)	PGH9000004	9850	PGH9000060	11600
	400	CHD400	PGH9000062	13000	PGH9000063	15900
	500	CHD500	PGH9000064	20100	PGH9000065	40400
	630	CHD630	PGH9000066	29500	PGH9000067	43400
	800	CHD800	PGH9000068	31000	PGH9000069	36300
			FP Moving Contact Assembly		FP Shrouded Base Assembly	
	100	CH1004P	PGH9000044	7600	PGH9000047	9300
	200	CH2004P	PGH9100045	7800	PGH9100048	9750
	315	CH3154P	PGH9100046	13600	PGH9000061	17950



NEW

Panel Mounting Switch Disconnecter/Switch Disconnecter Fuse Units/ Fuse Switch Disconnecter Units - Type Spectra SP Switch Disconnecter Fuse Units

Rating		List No.	Code Reference (TPN)	Buy Log/ Unit	Code Reference (4 Pole) Switched Neutral	Buy Log/ Unit	TPN SDF's in SS Enclosure		Recommended HBC Fuselinks (Type/Size)
Volt	Amp (AC23A)						Code Reference	Buy Log/ Unit	
660V AC	32	SP32 EIT-BS	SDFBS3PN032	1580 ■	4th Pole Switched Neutral available as accessory		SDFBS3PN032SSE	3150	EIT
		SP32-Clip-on	SDFNS3PN032	1570			SDFNS3PN032SSE	2900	F1
	63	SP63 EIT-BS	SDFBS3PN063	2150 ■			SDFBS3PN063SSE	3900	EIT
		SP63D - DIN	SDFDIN3PN063	2250			SDFDIN3PN063SSE	4100	C00/000
		SP63-Clip-on	SDFNS3PN063	2175			SDFNS3PN063SSE	3700	F2
415V AC	100	SP100-BS	SDFBS3PN100	4390	SDFBS4P100	5950	SDFBS3PN100SSE	6180	A2
		SP100(D) - DIN	SDFDIN3PN100	4700	SDFDIN4P100	5900	SDFDIN3PN100SSE	6700	C00/000/00
	125	SP03-BS	SDFBS3PN125	5600	SDFBS4P125	7500	SDFBS3PN125SSE	7350	A2
		SP03 (D) - DIN	SDFDIN3PN125	6125	SDFDIN4P125	7200	SDFDIN3PN125SSE	7950	00
	160	SP160-BS	SDFBS3PN160	5900	SDFBS4P160	7950	SDFBS3PN160SSE	8200	A4
		SP160(D) - DIN	SDFDIN3PN160	6700	SDFDIN4P160	8400	SDFDIN3PN160SSE	8600	00
	200	SP04-BS	SDFBS3PN200	6850 ■	SDFBS4P200	8500	SDFBS3PN200SSE	9600	B3
		SP04 (D) - DIN	SDFDIN3PN200	7700	SDFDIN4P200	9100	SDFDIN3PN200SSE	10200	1
	250	SP05-BS	SDFBS3PN250	8900 ■	SDFBS4P250	10800	SDFBS3PN250SSE	11500	B3
		SP05 (D) - DIN	SDFDIN3PN250	9950	SDFDIN4P250	11100	SDFDIN3PN250SSE	12600	1
	315	SP06-BS	SDFBS3PN315	11700	SDFBS4P315	13700	SDFBS3PN315SSE	14500	B3
		SP06 - DIN	SDFDIN3PN315	12450	SDFDIN4P315	14300	SDFDIN3PN315SSE	15100	2
	400	SP07-BS	SDFBS3PN400	13800 ■	SDFBS4P400	15500	SDFBS3PN400SSE	16100	C3
		SP07 (D) - DIN	SDFDIN3PN400	15100	SDFDIN4P400	16200	SDFDIN3PN400SSE	17300	2

Notes : For 630A & 800A, please contact us. All buylog excluding fuses.

Type Spectra SP Switch Disconnecter TPN

Rating		List No.	Code Reference (TPN)	Buy Log/ Unit
Volt	Amp			
690V AC	32	SP32	SD3PN032	1515
	63	SP63	SD3PN063	2120 ■
	100	SP100	SD3PN100	4800
415V AC	125	SP03	SD3PN125	5700
	250	SP05	SD3PN250	9100
	400	SP07	SD3PN400	13500

Accessories for SDF Type Spectra SP

Description	Code Reference	Buy Log/ Unit
Front Drive Kit for 32/63A	SDF63DD	650
Front Drive Kit for 100/03/160/04/05/06/07	SDF07DD	820

Other accessories common for Spectra SP & SP Switches (Please refer next page)





Panel Mounting Switch Disconnecter/Switch Disconnecter Fuse Units/ Fuse Switch Disconnecter Units - Type SP Switch Disconnecter Fuse Units

Rating		List No.	Code Reference (TPN)	Buy Log/ Unit	Code Reference (4 Pole Switched Neutral)	Buy Log/ Unit	TPN SDF's in SS Enclosure		Recommended HBC Fuselinks (Type/Size)
Volt	Amp (AC23A)						Code Reference	Buy Log/ Unit	
660V AC	32	SP32 EIT-BS	BGG8359044	1580 ■	4th Pole Switched Neutral available as accessory		BGG8358034	3150	EIT
		SP32-Clip-on	BGG8359144	1570			BGG8358134	2900	F1
	63	SP63 EIT-BS	BGG8361044	2150 ■			BGG8360034	3900	EIT
		SP63D - DIN	BGG8361344	2250			BGG8360334	4100	C00/000
		SP63-Clip-on	BGG8361144	2175			BGG8360134	3700	F2
415V AC	100	SP100-BS	SGG8363044	4390	SGG8363043	5950	SGG8363034	6180	A2
		SP100(D) - DIN	SGG8363344	4700	SGG8363343	5900	SGG8363334	6700	C00/000/00
	125	SP03-BS	SGG8362044	5600	SGG8362043	7500	BGG8362034	7350	A2
		SP03 (D) - DIN	SGG8362344	6125	SGG8362343	7200	BGG8362134	7950	00
	160	SP160-BS	SGG8365044	5900	SGG8365043	7950	SGG8365034	8200	A4
		SP160(D) - DIN	SGG8365344	6700	SGG8365343	8400	SGG8365334	8600	00
	200	SP04-BS	SGG8366044	6850 ■	SGG8366043	8500	BGG8364043	9600	B3
		SP04 (D) - DIN	SGG8366344	7700	SGG8366343	9100	BGG8364343	10200	1
	250	SP05-BS	SGG8368044	8900 ■	SGG8368043	10800	BGG8368034	11500	B3
		SP05 (D) - DIN	SGG8368344	9950	SGG8368343	11100	BGG8368334	12600	1
	315	SP06-BS	SGG8369044	11700	SGG8369043	13700	SGG8369034	14500	B3
		SP06 - DIN	SGG8369344	12450	SGG8369343	14300	SGG8369334	15100	2
	400	SP07-BS	SGG8372044	13800 ■	SGG8372043	15500	BGG8372034	16100	C3
		SP07 (D) - DIN	SGG8372344	15100	SGG8372343	16200	BGG8372334	17300	2
	630	SP630-BS	SGG8374044	22350	BGG8374043	25200	NA	NA	C3
		SP630(D) - DIN	SGG8374344	23900	BGG8374343	25500	NA	NA	3
	800	SP800-BS	SGG8380044	25800	BGG8380043	29100	NA	NA	C3
		SP800(D) - DIN	SGG8380344	25900	BGG8380343	29900	NA	NA	-

Notes : Buy Log excluding fuselinks

Type SP Switch Disconnecter TPN

Rating		List No.	Code Reference (TPN)	Buy Log/ Unit
Volt	Amp			
690V AC	32	SP32	BGG8459033	1515
	63	SP63	BGG8461033	2120 ■
415V AC	100	SP100	SGG9100004	4800
	125	SP03	SGG9100006	5700
	250	SP05	SGG9100013	9100
	400	SP07	SGG9100018	13500
	630	SP630	SGG9100020	on request

For other ratings and versions, please contact our nearest sales office

Accessories for SDF Type SP

For SP 630/800	Code Reference	Buy Log/ Unit
Switched neutral	BGG8900035	6300
Switch handle with legend plate & gasket	BGG8900036	3470
Tubular shaft	BGG8900037	850
Coupler assembly	BGG8900039	1260

Accessories for SDF Type SP

For SP 32/63	Code Reference	Buy Log/ Unit
Switched neutral	BGG8900027	580
Auxiliary kit (1NO+1NC)	BGG8900029	475
Auxiliary kit (1NO+1NC) only for SP63D	BGG8900041	475
Front drive kit for SDF/Switch (Black)	BGG8900031	650
Front drive for safety switches (Red & Yellow)	BGG8900032	710
For SP 100/03/160/04/05/06/07	Code Reference	Buy Log/ Unit
Auxiliary contact 1 NO	SGC8308027	325
Auxiliary contact 1 NC	SGC8308028	325
Phase barrier kit (SP100/03/160)	SGG8900006	215
Phase barrier kit (SP04/05)DIN	SGG8900012	420
Phase barrier kit (SP04/05)BS	SGG8900013	420
Phase barrier kit (SP06/SP07)	SGG8900007	420
FD kit for SP 100/03/160	SGG8900041	800
FD kit for (SP04/05/06/07)	SGG8900042	840

*For product codes, please contact our nearest sales office



All the FD kits will have door interlocking, defeat & pad locking as standard features

Type CMM - TPN Fixed Type FSDU

Rating		List No.	Code Reference	Buy Log/ Unit	Recommended HBC Fuselinks (Type/Size)
Volt	Amp				
415V AC	125	CMM125	PGM8162000	8500	B1 / B3
	200	CMM200	PGM8166000	11350	B1 / B3
	250	CMM250	PGM8168000	13650	B1 / B3
	315	CMM315	PGM8170000	16500	B3
	400	CMM400	PGM8172000	20900	C3
	630	CMM630	PGM8176000	32650	C1 / C2 / C3
	800	CMM800	PGM8178000	36150	C1 / C2 / C3

*Buy Log excluding fuselinks

TPN Withdrawable Type FSDU

Rating		List No.	Code Reference	Buy Log/ Unit	Recommended HBC Fuselinks (Type/Size)
Volt	Amp				
415V AC	200	CMM200D	PGM8166400	12400	B1 / B3
	250	CMM250D	PGM8168400	15500	B1 / B3
	315	CMM315D	PGM8170400	18900	B1 / B3
	400	CMM400D	PGM8172400	24600	C3
	630	CMM630D	PGM8176400	37000	C1 / C2 / C3
	800	CMM800D	PGM8178400	41400	C1 / C2 / C3

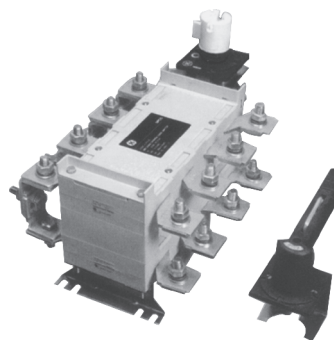
*Buy Log excluding fuselinks

Spares for CMM Units

Description	Code Reference	Buy Log / Unit
Front drive kit CMM		
CMM125	PGM0100070	3250
CMM200	PGM0100071	3250
CMM250	PGM0100072	3250
CMM315	PGM0100073	3250
CMM400	PGM0100074	3900
CMM630	PGM0100075	3900
CMM800	PGM0100076	4200
Moving Contact Carriage		
CMM125	PGM0100033	7750
CMM200	PGM0100035	7750
CMM250	PGM0100034	10100
CMM315	PGM0100036	10100
CMM400	PGM0100042	17200
CMM630	PGM0100043	24750
CMM800	PGM0100044	27750
Caliper Contact Assembly (Each unit requires 6 sets)		
CMM125	PGM0100077	810
CMM200	PGM0100078	810
CMM250	PGM0100079	810
CMM315	PGM0100080	810
CMM400	PGM0100081	810
CMM630	PGM0100082	1510
CMM800	PGM0100083	1510
Addon 4-pole	PGM8100068	6400

On Load Changeover Switch - 4 Pole Type SPCO

- Conforms to IS13947-3-1993
- Ratings 63A to 3150A, 4 pole, 415V AC 23A duty
- Compact in dimensions
- High mechanical life
- LOTO - safety feature allows padlocking and tag fixing
- Accessories - Auxiliary contacts - upto 2NO + 2NC (on request)
- Extendable shaft - 200mm



Voltage	Rating (A)	List No.	Code Reference	Buy Log/Unit
415V AC	63	SPCO 63	SGG 8601010	5100
	125	SPCO 125	SGG 8601020	9500
	200	SPCO 200	SGG 8601030	12800
	250	SPCO 250	SGG 8601040	18200
	320	SPCO 320	SGG 8601050	19000
	400	SPCO 400	SGG 8601060	27600
	630	SPCO 630	SGG 8601070	33000
	800	SPCO 800	SGG 8601080	47700
	1000	SPCO 1000	SGG 8601090	78800
	1250	SPCO 1250	SGG 8601100	109600
	1600	SPCO 1600	SGG 8601110	153000
	2000	SPCO 2000	SGG 8601120	188600
	2500	SPCO 2500	SGG 8601130	250700
	3150	SPCO 3150	SGG 8601140	341600



Moulded Case Circuit Breakers



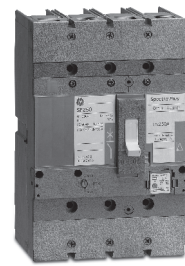
Record Range

- Conforms to IEC60947-2/IS13947-2
- Double break contact system - exceptional current limiting, low let through energy & high contact life
- Range - 16A to 1600A
- 3 pole and 4 pole versions
- Thermal magnetic & microprocessor based interchangeable trip units
- Maximum rated operational voltage - 690V AC
- Load line interchangeable
- Suitable for isolation
- Field fittable accessories:
 - Alarm / auxiliary switches
 - Shunt release
 - Front drive kits
 - UV release
- Motor operators, plug in & draw out versions, mechanical interlocking base plates, ATS controllers available for complete range



Spectra Range with Adjustable Trip Releases

- Conforms to IEC60947-2/IS13947-2
- Spectra TME - 3/4 pole 16A to 125A
Breaking capacity - 18kA, 25kA
- Spectra TM - 3/4 pole 16A to 200A
Breaking capacity - 25kA, 36kA
- Spectra Plus - Microprocessor release 20A-630A
Breaking capacity - 36, 50kA
- Range of internal and external accessories
- Universal EFM module upto 250A, 3 pole/4 pole

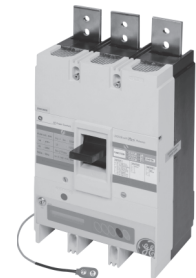


Type LM

- With Continuously Adjustable Electronic Release

- With microprocessor release

- Conforms to IS13947-2
- 3 pole and 4 pole versions
- Rated operational voltage - 415V AC
- 3 frame sizes from 3.2 to 800A
- Breaking capacities 25, 35, 50, 65kA
- Field fittable accessories:
 - Alarm / auxiliary switches
 - Shunt release
 - UV release
 - Earth fault module
 - Front drive kits



Type Therm 100 with Thermal Magnetic Trip Release*

- Conforms to IS13947-2
- Range upto 100A, 10kA, 415V AC
- 1 pole and 3 pole versions

*For details, please contact our nearest sales office





Record SL Features

- Comprehensive range: 16 to 800A in 1P¹, 3P, 4P
- Breaking capacities 16, 25, 36KA
- No line load biasing
- Available in fixed and adjustable overload settings
- Compact in size
- Suitable for isolation

Record SL- Standard Line Moulded Case Circuit Breakers - Thermal Magnetic Release

Type	Breaking Capacity	3Pole			4Pole		
		Rating(A)	Code Reference	Buy Log/Unit	Rating(A)	Code Reference	Buy Log/Unit
LD 160 Frame, O/L fix, S/C fix	16KA	16	LDB35TF016GF	3775	16	LDB435TF016GF	5400
		20	LDB35TF020GF	3775	20	LDB435TF020GF	5400
		25	LDB35TF025GF	3775	25	LDB435TF025GF	5400
		32	LDB35TF032GF	3775	32	LDB435TF032GF	5400
		40	LDB35TF040GF	3775	40	LDB435TF040GF	5400
		50	LDB35TF050GF	3775	50	LDB435TF050GF	5400
		63	LDB35TF063GF	3775	63	LDB435TF063GF	5400
		80	LDB35TF080GF	3775	80	LDB435TF080GF	5400
		100*	LDB35TF100GF	3775	100	LDB435TF100GF	5400
		125*	LDB35TF125GF	5700	125	LDB435TF125GF	7200
	160*	LDB35TF160GF	6800	160	LDB435TF160GF	8500	
	25KA	16	LDE35TF016GF	4100	16	LDE435TF016GF	5600
		20	LDE35TF020GF	4100	20	LDE435TF020GF	5600
		25	LDE35TF025GF	4100	25	LDE435TF025GF	5600
		32	LDE35TF032GF	4100	32	LDE435TF032GF	5600
		40	LDE35TF040GF	4100	40	LDE435TF040GF	5600
		50	LDE35TF050GF	4100	50	LDE435TF050GF	5600
		63	LDE35TF063GF	4100	63	LDE435TF063GF	5600
		80	LDE35TF080GF	4100	80	LDE435TF080GF	5600
		100*	LDE35TF100GF	4100	100	LDE435TF100GF	5600
125*		LDE35TF125GF	5800	125	LDE435TF125GF	7500	
160*	LDE35TF160GF	7200	160	LDE435TF160GF	9200		
LEE 250 Frame, Thermal Magnetic, O/L (0.7 to 1) In and S/C fix	16KA	125	LEB35TC125KF	6100	125	LEB435TC125KF	8000
		160	LEB35TC160KF	7400	160	LEB435TC160KF	9800
		200*	LEB35TC200KF	9300	200	LEB435TC200KF	14000
		250*	LEB35TC250KF	11500	250	LEB435TC250KF	17200
	25KA	125	LEE35TC125KF	6500	125	LEE435TC125KF	8500
		160	LEE35TC160KF	7600	160	LEE435TC160KF	10900
		200*	LEE35TC200KF	9800	200	LEE435TC200KF	15500
		250*	LEE35TC250KF	12900	250	LEE435TC250KF	18900
LJ 800 Frame, O/L adj., S/C adj.	36KA	500 [#]	LJV35TC500PF	22000	500	LJV435TC500PF	26900
		630	LJV35TC630PF	24500	630	LJV435TC630PF	30200
		800	LJV35TC800PF	30400	800	LJV435TC800PF	39000

Adjustable from 350A-500A ¹Single pole upto 160A available on request *with spreaders

Therm 100 MCCBs, Fix O/L and Fix S/C

Type	Breaking Capacity	Rating	1 Pole	3 Pole
			Buy Log/Unit	Buy Log/Unit
Therm 100 Frame O/L fix and S/C fix	10KA	16, 20, 25, 32, 40, 50, 63, 80, 100A	950	1850

DP available on request

Accessories for 2 Pole & 3 Pole

Type	Description	Buy Log/Unit
Manual operator	Door drive for Therm 100 3 pole	700
Internal accessories**	Auxiliary contact for Therm 100 3 pole	350
Internal accessories**	Trip alarm contact for Therm 100 3 pole	350

** Factory fitted only



Record SL-Standard Line Range Accessories

Type	Description	Code Reference	Buy Log/Unit
Manual Operators	Extended handle LD160	LDNRD	1200
	Extended handle LE250	LENRD	1500
	Extended handle LJ800	LJNRD	5800
Internal Accessories	Aux contact 1CO LD160	LDS11R	800
	Aux contact 2CO LD160	LDS21R	1000
	Aux contact 1CO LE250	LES11R	900
	Aux contact 2CO LE250	LES21R	1300
	Aux contact 1CO LJ800	LJS11R	1200
	Aux contact 2CO LJ800	LJS21R	1800
	Bell alarm LD160	LDBA11R	800
	Bell alarm LE250	LEBA11R	900
	Shunt release LD 220V AC	LDSHT6	900
	Shunt release LE 220V AC	LESHT6	1200
	Shunt release L J 220V AC	L JSHT6	1800
	Undervoltage release LD 220V AC	LDUVR6	1450
	Undervoltage release LE 220V AC	LEUVR6	1600
	Undervoltage release LJ 220V AC	LJUVR6	1800
Spreaders	Set of spreaders 1P LD160 Frame, 1 pc 5mm	LDBSC1	140
	Set of spreaders 3P LD160 Frame, 3 pcs 5mm	LDBSC3	400
	Set of spreaders 4P LD160 Frame, 4 pcs 5mm	LDBSC4	575
	Set of spreaders 3P LE250 Frame,3 pcs 6mm	LEBSC3	700
	Set of spreaders 4P LE250 Frame,4 pcs 6mm	LEBSC4	850
	Set of extenders 3P LJ800 Frame, 1side	LJBSC3P	3400
	Set of extenders 4P LJ800 Frame,1side	LJBSC4P	4200
Seperators	phase seperators 2 side 3 pole LD160 Frame	LDJP3	95
	phase seperators 2 side 4 pole LD160 Frame	LDJP4	140
	Phase seperators 2 side 3pole LE250 Frame	LEJP3	160
	Phase seperators 2 side 4pole LE250 Frame	LEJP4	240
	Phase seperators 2 side 3 pole LJ800 Frame	LJJP3	300
	Phase seperators 2 side 4 pole LJ800 Frame	LJJP4	400
Earth Fault Module	Universal microprocessor based Earth fault module upto 250A (external)	SGC8302061	8200



Record Plus Moulded Case Circuit Breakers

Type	Breaking Capacity	3Pole			4Pole		
		Rating(A)	Code Reference	Buy Log/Unit	Rating(A)	Code Reference	Buy Log/Unit
FDE 160 Frame Thermo Magnetic OL (0.8-1) in SC - Fixed	25kA	16A	433649	6100	16A	433697	8500
		20A	433651		20A	433699	
		25A	433653		25A	433701	
		32A	433655		32A	433703	
		40A	433657		40A	433705	
		50A	433659		50A	433707	
		63A	433661		63A	433709	
		80A	433663		80A	433711	
		100A	433665		100A	433713	
		125A	433667		7800	125A	
	160A	433669	9900	160A	433717	12900	

Type	Breaking Capacity	3Pole			4Pole		
		Rating(A)	Code Reference	Buy Log/Unit	Rating(A)	Code Reference	Buy Log/Unit
FDS 160 Frame Thermo Magnetic OL (0.8-1) in SC - Fixed	36kA	16A	430161	7200	16A	430224	9500
		20A	430163		20A	430226	
		25A	430165		25A	430228	
		32A	430167		32A	430230	
		40A	430169		40A	430232	
		50A	430178		50A	430241	
		63A	432952		63A	432964	
		80A	432955		80A	432967	
		100A	432958		100A	432970	
		125A	432961		9200	125A	
	160A	433602	12500	160A	433604	13800	



Record Plus Moulded Case Circuit Breakers

Type	Breaking Capacity	3Pole			4Pole		
		Rating(A)	Code Reference	Buy Log/Unit	Rating(A)	Code Reference	Buy Log/Unit
FDN 160 Frame Thermo Magnetic OL (0.8-1) in SC - Fixed	50kA	16A	430100	9700	16A	430131	12000
		20A	430101		20A	430132	
		25A	430102		25A	430133	
		32A	430103		32A	430134	
		40A	430104		40A	430135	
		50A	430105		50A	430136	
		63A	430106		63A	430137	
		80A	430630		80A	430752	
		100A	430633		100A	430755	
		125A	430636		13000	125A	
		160A	433572	15800	160A	433590	18200

Record Plus Accessories for FD Frame

Type	Description	Code Reference	Buy Log/Unit
Manual Operator	Extended / panel or door mounted rotary handle	SGC9436476	1800
	Rotary handle through door*	436474	1600
	Flange	430829	400
Electrical Operator	Motor mechanism 24V AC/DC	430926	14500
	Motor mechanism 48V AC/DC	430929	
	Motor mechanism 60V AC/DC	430932	
	Motor mechanism 110V AC/DC	430935	
	Motor mechanism 220/250V AC/DC	430938	
	Motor mechanism 400/440V AC	430920	
Connection Accessories	3 Pole spreader for FD - (set of 3)	430891	600
	4 Pole spreader for FD - (set of 4)	430892	850
	Phase barrier FD - (set of 12)	430957	700
	FD - Plug-in system 3 Pole	430893	7000
	FD - Plug-in system 4 Pole	430896	8000
RCD Modules	RCD Bottom mounted 3P 220/440V	431078	11000
	RCD Bottom mounted 3P 400/690V	431076	10300
	RCD Bottom mounted 4P 220/440V	431084	11400
	RCD Bottom mounted 4P 400/690V	431080	11400

* Door flange FDFH to be ordered separately to use the door interlock options

Type	Description	Code Reference	Buy Log/Unit
Earth Fault Module	Universal microprocessor based earth fault module upto 250A (External)	SGC8302061	8200



Record Plus Moulded Case Circuit Breakers

Type	Breaking Capacity	3Pole			4Pole		
		Rating(A)	Code Reference	Buy Log/Unit	Rating(A)	Code Reference	Buy Log/Unit
FEV 250 Frame Thermo Magnetic OL (0.8-1) In SC -(5-10) In	36kA	MCCB with Thermo Magnetic Release					
		160A	436798	16200	160A	436817	19200
		200A	431058	16200	200A	431094	19200
		250A	431061	18000	250A	431097	21800

Type	Breaking Capacity	3Pole			4Pole		
		Rating(A)	Code Reference	Buy Log/Unit	Rating(A)	Code Reference	Buy Log/Unit
FEN 250 Frame Thermo Magnetic OL (0.8-1) In SC -(5-10) In	50kA	MCCB with Thermo Magnetic Release					
		100A	431757	17700	100A	431955	22200
		125A	432962	17700	125A	433070	22200
		160A	432976	18200	160A	433076	24000
		200A	432979	18200	200A	433079	24000
		250A	432982	20500	250A	433082	24500

Type	Breaking Capacity	3Pole			4Pole		
		Rating(A)	Code Reference	Buy Log/Unit	Rating(A)	Code Reference	Buy Log/Unit
FEN 250 Frame Micro processor SC -(2-13) Ir	50kA	MCCB with Microprocessor Release SMR 1 w/o Rating Plug					
		125A	431920	20800	125A	431938	25900
		160A	431706	20800	160A	431793	25900
		250A	431709	23100	250A	431796	30000

Type	Description	3Pole			4Pole		
		Rating(A)	Code Reference	Buy Log/Unit	Rating(A)	Code Reference	Buy Log/Unit
Adjustable Rating Plug FE 250	OL (0.625-1)In	Rating Plug for SMR1					
		125A	432192	1000	125A	432294	1200
		160A	432195	1000	160A	432297	1200
		250A	432207	1000	250A	432309	1200
Switchable Rating Plug FE 250 (Motor/Line)	OL (0.4-1)In	250A	432327	1200	250A	432378	1600

Type	Description	Code Reference	Buy Log/Unit
Earth Fault Module	Universal microprocessor based Earth fault module upto 250A (External)	SGC8302061	8200



Record Plus Accessories for FE Frame

Type	Description	Code Reference	Buy Log/Unit
Manual Operators	Extended / panel or door mounted rotary handle	SGC9436493	1900
	Rotary handle through door*	436491	1700
	Flange	430829	400
Electrical Operators	Motor mech 24V AC/DC	432052	19200
	Motor mech 48V AC/DC	432055	
	Motor mech 60V AC/DC	432058	
	Motor mech 110/130V AC/DC	432061	
	Motor mech 220/250V AC/DC	432064	
	Motor mech 400/440 V AC	435812	
Connection Accessories	3 pole spreader for FE-(set of 3)	432032	1000
	4 pole spreader for FE-(set of 4)	432033	1200
	Phase barrier set of 12	432085	950
	Plug-in unit 3P	432034	9500
	Plug-in unit 4P	432037	12000
	Draw out system 3P	432538	15000
	Draw out system 4P	432544	17500
RCD Module	3P, 160A 220/440V AC-Bottom mounted	431136	10500
	3P, 160A 400/690V AC-Bottom mounted	431118	10500
	3P, 250A 220/440V AC-Bottom mounted	431139	12000
	3P, 250A 400/690V AC-Bottom mounted	431124	12000
	4P, 160A 220/440V AC-Bottom mounted	431159	10500
	4P, 160A 400/690V AC-Bottom mounted	431145	10500
	4P, 250A 220/440V AC-Bottom mounted	431161	12000
	4P, 250A 400/690V AC-Bottom mounted	431151	12000

* Door Flange FDFH to be ordered separately to use the door interlock options

Record Plus Moulded Case Circuit Breakers

Type	Breaking Capacity	3Pole			4Pole		Buy Log/Unit
		Rating(A)	Code Reference	Buy Log/Unit	Rating(A)	Code Reference	
FGN Frame Micro processor	50kA	MCCB with Microprocessor Release SMR1 w/o rating plug					
		400A	431455	32000	400A	431536	39800
		630A	431461	33800	630A	431539	42800
	Description	Rating Plug for SMR1					
Adjustable Rating Plug	OL (0.625-1) In	FG400-400A	433151	1000	FG400-400A	433187	1200
		FG630-630A	433157	1000	FG630-630A	433193	1200
Switchable Rating Plug (Motor/Line)	OL (0.4-1) In	FG400-350A	435435	1200	FG400-350A	434537	1400
		FG630-500A	434512	1200	FG630-500A	434542	1400
	Breaking Capacity	MCCB with Microprocessor Release SMR2 w/o rating plug					
FGN Frame Micro processor	50kA	400A	436156	44000	400A	436160	52000
		630A	436158	46500	630A	434092	55000
	Description	Rating Plug for SMR2					
Adjustable LT & LTD Rating Plug	OL (0.625-1) In	FG400-400A	436721	1400	FG400-400A	434584	1600
		FG630-630A	436722	1400	FG630-630A	434532	1600
Manual Operator		Extended / Panel or door mounted handle - FG			436506		3000
		Direct mounted rotary handle - FG			436509		2500



Record Plus Accessories for FG Frame

Type	Description	Code Reference	Buy Log/ Unit
FG Electrical Operator	Motor operator 24V AC/DC	432817	27200
	Motor operator 48V AC/DC	432820	
	Motor operator 60V AC/DC	432823	
	Motor operator 110V AC/DC	432826	
	Motor operator 220/250V AC/DC	432829	
	Motor operator 400/440V AC	432811	
Connection Accessories	3 pole spreader for FG-(set of 3)	431981	2700
	4 pole spreader for FG-(set of 4)	431982	3200
	Phase separator (set of 12)	432852	1500
	Plug-in unit 3 pole	430944	17000
	Plug-in unit 4 pole	431064	21000
	Draw out system 3 pole	432550	26000
	Draw out system 4 pole	432556	29000
RCD Modules	FG RCD 3P 400/630A 220/440V	431172	19000
	FG RCD 3P 400/630A 400/690V	431163	19000
	FG RCD 4P 400/630A 220/440V	431181	23000
	FG RCD 4P 400/630A 400/690V	431175	23000

SMR2 optional modules

Add on Modules SMR 2	External contact module (4 contacts, 1A/400V)	434013	10500
	Ammeter with 4 digit LCD display	436183	6000
	Groundfault alarm + modbus communication	436185	9000
	Groundfault alarm + 2 channel load shedding device	436186	7000
	Groundfault alarm + fault type indicators	436187	9000
	Groundfault protection + modbus communication	436188	9000
	Groundfault protection + 2 channel load shedding device	436189	7000
	Groundfault protection + fault type indicators	436190	9000
	2 Channel load shedding device + modbus communication	436192	9000
	2 Channel load shedding device + fault type indicators	436197	7000
	Fault type indicators + modbus communication	436191	9000

Accessories common to FD / FE / FG

Auxiliary Alarm Contact	Aux. switch right mounted 1NO	430837	550
	Aux. switch right mounted 1NC	430831	
	Aux. switch left mounted 1NO	430834	
	Aux. switch left mounted 1 NC	430828	
	Bell alarm electronic trip unit (FD/FE/FG) /Bell alarm RCD device (FD/FE/FG) 1NO	430818	
	Bell alarm electronic trip unit (FD/FE/FG) /Bell alarm RCD device (FD/FE/FG) 1NC	430815	
	Bell alarm thermal magnetic trip unit (FE only) 1NO	430970	
	Bell alarm thermal magnetic trip unit (FE only) 1NC	430969	
	Bell alarm mechanism - 1C / O contact (1NO + 1NC) - FD only (not for FDC & FDE)	430880	
	Bell alarm mechanism (FE/FG) - 1NO	432003	
	Bell alarm mechanism (FE/FG) - 1NC	432000	
	Shunt Release	Shunt release 12V DC	
Shunt release 24V AC/DC		430843	
Shunt release 48V AC/DC		430846	
Shunt release 110/130V AC/DC		430849	
Shunt release 220/240V AC 250V DC		430852	
Shunt release 400/480V AC		430855	
UV Release	Under voltage release 24V AC/DC	430861	2050
	Under voltage release 48V AC/DC	430864	
	Under Voltage release 110/130V AC/DC	430867	
	Under voltage release 220/240V AC 250V DC	430870	
	Under voltage release 400/480V AC	430873	



Record Plus Moulded Case Circuit Breakers & Accessories for FK Frame

Poles	Breaking Capacity (Icu)	Description	Code Reference	Buy Log/ Unit	
Thermo Magnetic Release					
3	50kA	630A	435444	For details, please contact our nearest sales office	
3	50kA	800A	435336		
3	50kA	1000A	435550		
3	50kA	1250A	435551		
Micro Processor Release SMR					
3	50kA	800A	435393		
3	50kA	1000A	435396		
3	50kA	1250A	435384		
3	50kA	1600A	435387		
4	50kA	800A	435447		
4	50kA	1000A	435450		
4	50kA	1250A	435438		
4	50kA	1600A	435441		
Thermo Magnetic Release					
3	80kA	630A	435426		
3	80kA	800A	435318		
3	80kA	1000A	435553		
3	80kA	1250A	435554		
Micro Processor Release SMR					
3	80kA	800A	435288		
3	80kA	1000A	435276		
3	80kA	1250A	435279		
3	80kA	1600A	435285		
4	80kA	800A	435339		
4	80kA	1000A	435342		
4	80kA	1250A	435330		
4	80kA	1600A	435333		
	Motor mechanism 24V AC/DC		436322*		
	Motor mechanism 48V AC/DC		436321*		
	Motor mechanism 110V AC		436323*		
	Motor mechanism 230V AC		436324*		
	Ext. rotary handle		436519		
	Direct rotary handle		436522		
	Aux. disconnects		435758		
	Bell alarm contact right mounted CO		435761		
	Aux. switch right mounted CO		436401		
	Shunt release 380/440V AC/DC		435692		
	Shunt release 24V AC/DC		435693		
	Shunt release 48V AC/DC		435694		
	Shunt release 110/130V AC/DC		435695		
	Shunt release 220/240V AC 250V DC		435696		
	Delayed under voltage release 230V AC		435697		
	Undervoltage release 24V AC		435698		
	Undervoltage release 230V AC		435699		
	Undervoltage release 400V AC		435700		
	Undervoltage release 24V DC		435701		
	Undervoltage release 48V DC		435702		
	Spreader for FK08 - FK12 3 pole		435708		
	Spreader for FK16 3 pole		435710		
	Spreader for FK08 - FK12 4 pole		435711		
	Spreader for FK16 4 pole		435712		
	Phase barrier FK		435722		

*Factory fitted only. For field mountable type contact our nearest office. DC voltages for 110/220V available on request.



Spectra Range of Moulded Case Circuit Breakers

Thermal Magnetic Release (Adjustable Overload)

Type	Breaking Capacity	3Pole			4Pole		
		Rating(A)	Cat No.	Buy Log/Unit	Rating(A)	Cat. No.	Buy Log/Unit
Spectra TME	18kA	16	STC34TME016F	4600	16	STC44TME016F	5600
		20	STC34TME020F	4600	20	STC44TME020F	5600
		32	STC34TME032F	4600	32	STC44TME032F	5600
		40	STC34TME040F	4600	40	STC44TME040F	5600
		50	STC34TME050F	4600	50	STC44TME050F	5600
		63	STC34TME063F	4600	63	STC44TME063F	5600
		80	STC34TME080F	4600	80	STC44TME080F	5600
		100	STC34TME100F	4600	100	STC44TME100F	5600
	125	STC34TME125F	5800	125	STC44TME125F	7800	
	25kA	16	STE34TME016F	4700	16	STE44TME016F	6600
		20	STE34TME020F	4700	20	STE44TME020F	6600
		32	STE34TME032F	4700	32	STE44TME032F	6600
		40	STE34TME040F	4700	40	STE44TME040F	6600
		50	STE34TME050F	4700	50	STE44TME050F	6600
		63	STE34TME063F	4700	63	STE44TME063F	6600
		80	STE34TME080F	4700	80	STE44TME080F	6600
		100	STE34TME100F	4700	100	STE44TME100F	6600
		125	STE34TME125F	6500	125	STE44TME125F	8600

Thermal Magnetic Release (Adjustable Overload)

Type	Breaking Capacity	3Pole			4Pole		
		Rating(A)	Cat. No.	Buy Log/Unit	Rating(A)	Cat. No.	Buy Log/Unit
Spectra TM	25kA	16	STE34TM016F	5200	16	STE44TM016F	6900
		20	STE34TM020F	5200	20	STE44TM020F	6900
		32	STE34TM032F	5200	32	STE44TM032F	6900
		40	STE34TM040F	5200	40	STE44TM040F	6900
		50	STE34TM050F	5200	50	STE44TM050F	6900
		63	STE34TM063F	5200	63	STE44TM063F	6900
		80	STE34TM080F	5200	80	STE44TM080F	6900
		100	STE34TM100F	5200	100	STE44TM100F	6900
		125	STE34TM125F	7300	125	STE44TM125F	8600
		160	STE34TM160F	9100	160	STE44TM160F	11000
	200	STE34TM200F	11800	200	STE44TM200F	15500	
	36kA	16	STS34TM016F	6650	16	STS44TM016F	8000
		20	STS34TM020F	6650	20	STS44TM020F	8000
		32	STS34TM032F	6650	32	STS44TM032F	8000
		40	STS34TM040F	6650	40	STS44TM040F	8000
		50	STS34TM050F	6650	50	STS44TM050F	8000
		63	STS34TM063F	6650	63	STS44TM063F	8000
		80	STS34TM080F	6650	80	STS44TM080F	8000
		100	STS34TM100F	6650	100	STS44TM100F	8000
		125	STS34TM125F	7650	125	STS44TM125F	9200
		160	STS34TM160F	9900	160	STS44TM160F	11900
		200	STS34TM200F	12500	200	STS44TM200F	17000

Spectra TME Accessories

Code	Accessories	Buy Log/Unit
STMETA ⁽¹⁾	Trip alarm contact	900
STMEAUX ⁽²⁾	Auxiliary contact 1C/0	900
STMEROHD	Rotary handle (Door mounted)	1100
STMEPB1	Phase barriers (Set of 2)	130
STMESPRD1	Spreaders (Set of 3)	500

Notes:

1. STMTA4 for 4 pole MCCB
2. STMEAUX2CO aux. contact 2C/0 - Buy Log 1200/-

Spectra TM Accessories

Code	Accessories	Buy Log/Unit
STMSR1	Shunt release 110 - 415V	950
STMTA ⁽¹⁾	Trip alarm contact	950
STMAUX ⁽²⁾	Auxiliary contact	950
STMROHD	Rotary handle (Door mounted)	1150
STMPB1	Phase barriers (Set of 2)	130
STMSPRD1	Spreaders (Set of 3)	600
STMSPRD2	Spreaders (Set of 4)	800
STMALAX*	Alarm + Auxiliary switch	1700
SGC8302061	Universal EFM suitable for Spectra TM / TME upto 250A	8200



Spectra Range of Moulded Case Circuit Breakers

Microprocessor based release (Adjustable Overload, Adjustable Short circuit)

Type	Breaking Capacity	3Pole			4Pole		
		Rating(A)	Cat No.	Buy Log/Unit	Rating(A)	Cat No.	Buy Log/Unit
Spectra Plus	36kA	25	SES34ATO32F25	11500	25	SES44ATO32F25	15200
		32	SES34ATO32F	11500	32	SES44ATO32F	15200
		50	SES34ATO63F50	11500	50	SES44ATO63F50	15200
		63	SES34ATO63F	11500	63	SES44ATO63F	15200
		80	SES34AT100F80	11500	80	SES44AT100F80	15200
		100	SES34AT100F	11500	100	SES44AT100F	15200
		125	SES34AT160F125	13900	125	SES44AT160F125	17500
		160	SES34AT160F	14800	160	SES44AT160F	18900
		200	SFS34AT250F200	17800	200	SFS44AT250F200	25400
		250	SFS34AT250F	18900	250	SFS44AT250F	26900
		320	SGS34AT400F320	23500	320	SGS44AT400F320	30800
		400	SGS34AT400F	23500	400	SGS44AT400F	30800
		500	SGS34AT630F500	26500	500	SGS44AT630F500	37000
		630	SGS34AT630F	26500	630	SGS44AT630F	37000
	50kA	25	SEN34AT032F25	13800	25	SEN44AT032F25	17500
		32	SEN34AT032F	13800	32	SEN44AT032F	17500
		50	SEN34ATO63F50	13800	50	SEN44ATO63F50	17500
		63	SEN34ATO63F	13800	63	SEN44ATO63F	17500
		80	SEN34AT100F80	13800	80	SEN44AT100F80	17500
		100	SEN34AT100F	13800	100	SEN44AT100F	17500
		125	SEN34AT160F125	14200	125	SEN44AT160F125	21900
		160	SEN34AT160F	17000	160	SEN44AT160F	23000
		200	SFN34AT250F200	18900	200	SFN44AT250F200	27500
		250	SFN34AT250F	21000	250	SFN44AT250F	28900
		320	SGN34AT400F320	26000	320	SGN44AT400F320	32000
		400	SGN34AT400F	26000	400	SGN44AT400F	32000
		500	SGN34AT630F500	29000	500	SGN44AT630F500	37500
		630	SGN34AT630F	29000	630	SGN44AT630F	37500

Spectra Plus Accessories

Code	Accessories	Buy Log/Unit
SAUX1	Spectra Plus auxiliary contact 'S' type 1 changeover	1470
SAUX2	Spectra Plus auxiliary contact 'S' type 2 changeover	1925
SAST1	Spectra Plus shunt 110 AC/DC	1925
SAST2	Spectra Plus shunt 220 AC/DC	1925
SAST3	Spectra Plus shunt 24 AC/DC	1925
SAST4	Spectra Plus shunt 48 AC/DC	1925
SAUV1	Spectra Plus undervoltage 110 AC/DC	1925
SAUV2	Spectra Plus undervoltage 220 AC/DC	1925
SAUV3	Spectra Plus undervoltage 24 AC/DC	1925
SAUV4	Spectra Plus undervoltage 48 AC/DC	1925
SABAP1	Spectra Plus bell alarm contact	1925
SAEFROH	Spectra Plus extended handle SE 160/SF250	1470
SAEGROH	Spectra Plus extended handle SG400/600	1925
SAESPRD3P	3Pole Spreaders for SE 160 - 160A (Set of 3)	600
SAESPRD4P	4Pole Spreaders for SE 160 - 160A (Set of 4)	850
SAFSPRD3P	3Pole Spreaders for SE 250 - 250A (Set of 3)	800
SAFSPRD4P	4Pole Spreaders for SE 250 - 250A (Set of 4)	1100
SAGSPRD3P	3Pole Spreaders for SE 630 - 630A (Set of 3)	1600
SAGSPRD4P	4Pole Spreaders for SE 630 - 630A (Set of 4)	2000
SGC8302061	Universal EFM suitable for Spectra Plus upto 250A (external)	8200



LM Moulded Case Circuit Breaker - 3 Pole and 4 Pole

(With continuously adjustable electronic release) O/L (I_r): 0.5-1 In, S/C: 2-10 Ir

Breaking Capacity Ics (KA)	Rating (A)	Type	3 Pole		4 Pole*	
			Code Reference	Buy Log/ Unit	Code Reference	Buy Log/ Unit
25	3.2	LM100C	SGC8848050	8900	SGC8848041	11800
25	6.3	LM100C	SGC8854050	8900	SGC8854041	11800
25	12.5	LM100C	SGC8860050	8900	SGC8860041	11800
25	25	LM100C	SGC8866050	8900	SGC8866041	11800
25	50	LM100C	SGC8872050	8900	SGC8872041	11800
25	100	LM100C	SGC8801050	8900 ■	SGC8801041	11800 ■
25	125	LM125C	SGC8890050	10400 ■	SGC8890041	13800
25	160	LM160C	SGC8896050	11500 ■	SGC8896041	15500
25	200	LM200C	SGC8188070	14300 ■	SGC8802041	19100 ■
35	3.2	LM100R	SGC8848030	9400	SGC8848021	12200
35	6.3	LM100R	SGC8854030	9400	SGC8854021	12200
35	12.5	LM100R	SGC8860030	9400	SGC8860021	12200
35	25	LM100R	SGC8866030	9400	SGC8866021	12200
35	50	LM100R	SGC8872030	9400	SGC8872021	12200
35	100	LM100R	SGC8801030	9400	SGC8801021	12200
35	125	LM125R	SGC8890030	10900	SGC8890021	14400
35	160	LM160R	SGC8896030	12200	SGC8896021	16200
35	200	LM200R	SGC8188060	14900	SGC8802021	20300
35	250	LM250R	SGC8888090	18100	SGC8882001	23500
50	3.2	LM100	SGC8848010	10900	SGC8848001	12900
50	6.3	LM100	SGC8854010	10900 ■	SGC8854001	12900
50	12.5	LM100	SGC8860010	10900	SGC8860001	12900
50	25	LM100	SGC8866010	10900 ■	SGC8866001	12900
50	50	LM100	SGC8872010	10900	SGC8872001	12900
50	100	LM100	SGC8801010	10900 ■	SGC8801001	12900 ■
50	125	LM125	SGC8890010	12500	SGC8890001	21600
50	200	LM200	SGC8188050	16700 ■	SGC8802001	25300 ■
50	250	LM250B	SGC8188090	19400 ■	SGC8888001	25900 ■
50	400	LM400B	SGC8804310	25800	SGC8804001	31600 ■
50	630	LM630B	SGC8806200	28700	SGC8806001	35600 ■
50	800	LM800B	SGC8808150	34500	SGC8808001	42700

LM Pro MCCBs - With Microprocessor Release

(with O/L Short circuit, Instantaneous, Earth fault, Distinct fault indication & Trip history)

50	400	LM400B	SGC8804320	35500	SGC8804005	44000
50	630	LM630B	SGC8806210	38000	SGC8806005	47000
50	800	LM800B	SGC8808160	43000	SGC8808005	56000

* 4 Pole MCCB's - Neutral 100% rated

Accessories for LM MCCB (3 Pole and 4 Pole) - Field Fittable

Frame	Rotary Controls 3 & 4 Pole		EFM ♦ (Adj. Setting)	UV Electronic #240/415V AC
	Code Reference	Buy Log/Unit	3 Phase, 3 Wire systems	Buy Log/ Unit
100/125/160A	SGC8301073	1260 ■	8200	1800
200/250A	SGC8302055	1400	10500	NA
400/630/800A	SGC8308041	1600 ■	11500	NA

NOTE:

The electronic UV is not a no volt coil, contact our nearest sales office for technical specifications

♦ External CBCT has tapping of 20%, 30% and 40%

Accessories for LM MCCB (3 Pole and 4 Pole) - Field Fittable Accessories

For use with	Aux/Alarm Contact (1NO)		Aux/Alarm Contact (1NC)		UV Release			Shunt Trip Release		
	Code Reference	Buy Log/ Unit	Code Reference	Buy Log/ Unit	Voltage (AC)	Code Reference	Buy Log/ Unit	Voltage	Code Reference	Buy Log/ Unit
100A/125A/160A	SGC8308027	300	SGC8308028	300	240V	Factory fitted	1950	110-415V AC	SGC8301071	1750 ■
					415V			110-220V DC		
200A/250A	SGC8308027	300	SGC8308028	300	240V	SGC8302044	1950	110-415V AC	SGC8301071	1750 ■
					415V	SGC8302043	1950	110-220V DC		
					415V	SGC8302053*	1950	24-48V AC/DC	SGC8301072	
					415V	SGC8302054*	1950	24-48V AC/DC	SGC8301072	
400A/630A/800A	SGC8308027	300	SGC8308028	300	240V	SGC8308035	1950	110-415V AC	SGC8308039	1750 ■
					415V	SGC8304016*	1950	110-220V DC		
					415V	SGC8308034	1950	24-48V AC/DC	SGC8308040	



* UV release with delay, 200 + msec available on request, contact our nearest sales office for delivery. EFM 4 pole - Factory fitted

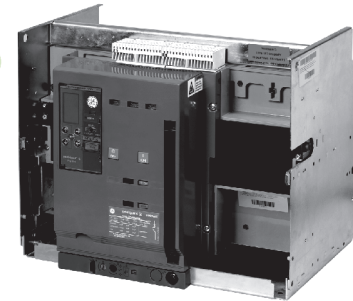
Spectronic S Air Circuit Breaker

- New generation ACBs with most modern design with "Static" or "Microprocessor based" protection releases, ensuring total discrimination
- Conforms to IEC60947-2/IS13947-2. Type tested at CPRI for IS13947-2
- Range 800A to 4000A
- High breaking capacities from 55kA to 75kA
- 3 pole and 4 pole versions, withdrawable and fixed type, manual or motor operation
- Tropicalised to Class I (standard) and Class II (optional)
- Static release LMZ - 7 with O/L, S/C, & E/F protection
- Microprocessor based protection release - RMS7, RMS9D, RMS10 (communication compatible - RMS releases on request)
- Flexible terminal options
- Highest electrical & mechanical endurance
- Most user friendly for handling



Entelliguard range of Air Circuit Breakers

- 400A to 6400A in 3 frame sizes in 3/4 Poles
- Compliance with IEC 60947-2
- Designed at 50°C ambient
- Breaking capacity 50KA to 150KA (ICS=ICU)
- Suitable for AC/ DC applications
- High end μP based releases
- Current metering and last 10 trips as standard
- RELT – unique feature for operator safety
- EF – as low as 10%In setting with REF/SEF options
- Modbus/Profibus communication
- Flexibility in termination- site convertible/ interchangeable
- Suitable for Aluminium termination
- Wide range of internal & external accessories



VCB (VB2-12)

- Conforms to IEC662271-100
- Rated voltage-12KV
- Rated current-630, 1250, 1600, 2500, 3150, 4000A
- Rated breaking current for short circuit-25, 31.5 & 40kA
- Rated short circuit withstand current for 4 sec-25, 31.5 & 40kA
- Rated power frequency withstand voltage (1Min)-42kV
- Mechanical life-20000 times
- Horizontal draw out, horizontal isolation type
- 3 Pole, withdrawable type with manual & motor operation
- Accessories-closing & tripping coil, earthing switching and truck, break handling trolley etc.
- CPRI, KERI, KEMA and CCC tested



MV Switchgear (PV2-12)

- Conforms to IEC62271-200
- Rated voltage & frequency - 3.6-12KV and 50 Hz
- Metal clad withdrawable & compartmentalized switchgear
- Degree of protection - IP4X
- Incomer, bus coupler and outgoing configuration with CTs, PTs, metering & protection based on specification

*For details, please contact our nearest sales office



Spectronic S ACB Withdrawable Version

Release Selection

LMZ7

- Standard protection - overload, short circuit

Option (Factory fitted)

- With Earth fault protection
- With Distinct fault indicator

RMS 7

- Standard protection - overload, short circuit & instantaneous

Option (Site fittable)

- Earth fault (EF) protection
- Distinct fault indicator (O/L, S/C & EF)
- Rating plug

RMS10 / RMS12

- Standard protection - overload, Short circuit, instantaneous & Earth fault
- Communication port - (RMS releases on request)

Options (Site fittable)

- Rating plug
- Voltage conditioner (set of 3) - for all voltage based parameters including power measurement
- Zone selective interlock
- Protective relay functions
- Load shedding
- Metering package

Schedule 'A' lists prices of Air Circuit Breaker with the following accessories IMS	Schedule 'B' lists prices of Air Circuit Breaker with the following accessories MWS
1 no. Independent manual spring closing mechanism	1 no. Motor-Wound spring charged closing with motor
1 no. Static release LMZ-7 with 4 CTs	1 no. Closing coil
or	1 no. Shunt Trip Release
1 no. Microprocessor (μ P) release RMS 7 with 3* CTs of standard ratings	1 no. Static release LMZ 7 with 4 CTs
or	or
1 no. Auxiliary Switches with 4NO + 4NC contacts	1 no. Microprocessor (μ P) release RMS 7 with 3* CTs of standard ratings
4 nos. Blocks of 6-Way sliding type LT disconnectors	1 no. Auxiliary Switch with 4 NO + 4 NC contacts
1 no. Rating Error prevention plug	1 no. Blocks of 6-Way sliding type LT disconnectors
1 no. Racking handle	1 no. Rating error prevention plug
1 no. Set of safety shutter	1 no. Racking handle
	1 no. Set of safety shutter

* If RMS 7 is ordered with EF module the ACB is supplied with 4 CTS. 4 Pole ACB is supplied with 4 CTS. 4th CT for Neutral

Spectronic SP ACB Fixed Version (IMS)

- Fixed version with rear horizontal terminals
- Two basic frame sizes covering from 800A to 1600A in frame 1 & 2000 and 2500A in frame 2 (Height & depth remains same through out the range)
- Breaking capacities from 55k - 60kA
- 3 pole and 4 pole configuration
- Field fittable accessories like under voltage and shunt trip release
- Manually operated
- Accurate protection with static / microprocessor based protection releases (LMZ7/RMS7/RMS10)



Retrofit Kit for Mpack

- Comprehensive range 400A-4000 A
- Ready to plug-in kit
- Integrity of system is maintained as tested with enclosure
- No bus-bar dismantling
- No fabrication of panel sides / doors
- Quick and fast Retrofit 2-3 hours time
- Proper discrimination
- All volt-metric releases accessible from front
- Upgrading to microprocessor based releases and communication option

Notes:

1. For details, please contact our nearest sales office
2. Price available on request



Spectronics S Range 3Pole Draw-Out ACBs

Rating (A)	Static Release LMZ7* (O/L,S/C)		Microprocessor Release RMS7 (O/L,S/C)		Microprocessor Release RMS7 (O/L,S/C, E/F)		Microprocessor Release RMS10 (O/L,S/C,E/F, with display)	
	IMS	MWS	IMS	MWS	IMS	MWS	IMS	MWS
	Schedule A	Schedule B	Schedule A	Schedule B	Schedule A	Schedule B	Schedule A	Schedule B
800	109000	145000	119300	153600	123800	158100	127300	161600
1000	117000	152900	126800	161100	131300	165600	134800	169100
1250	144000	180800	149600	184300	154100	188800	157600	192300
1600	159000	183000	165100	202900	169600	207400	173100	210900
2000	193200	229300	199500	233800	204000	238300	207500	241800
2500	233300	266700	238000	271900	242500	276400	246000	279900
3200	301400	335800	302500	336800	307000	341300	310500	344800
4000	410000	445000	419000	454000	423500	458500	427000	462000

Spectronics S Range 4Pole Draw-Out ACBs

Rating (A)	Static Release LMZ7* (O/L,S/C)		Microprocessor Release RMS7 (O/L,S/C)		Microprocessor Release RMS7 (O/L,S/C, E/F)		Microprocessor Release RMS10 (O/L,S/C,E/F, with display)	
	IMS	MWS	IMS	MWS	IMS	MWS	IMS	MWS
	Schedule A	Schedule B	Schedule A	Schedule B	Schedule A	Schedule B	Schedule A	Schedule B
800	144900	178400	156300	190500	160800	195000	164300	198500
1000	153700	189000	165800	199000	170300	203500	173800	207000
1250	181800	213700	186800	219600	191300	224100	194800	227600
1600	197600	233600	207500	240500	212000	245000	215500	248500
2000	250300	283600	253800	288100	258300	292600	261800	296100
2500	295500	328300	298700	331000	303200	335500	306700	339000
3200	371000	405000	372000	406000	376500	410500	380000	414000
4000	531000	566000	540000	575000	544500	579500	548000	583000

Spectronics SP Range Fixed ACBs (IMS)

Rating (A)	Static Release LMZ7* (O/L,S/C)		Microprocessor Release RMS7 (O/L,S/C)		Microprocessor Release RMS7 (O/L,S/C, E/F)		Microprocessor Release RMS10 (O/L,S/C,E/F, with display)	
	3Pole	4Pole	3Pole	4Pole	3Pole	4Pole	3Pole	4Pole
	800	63200	83700	70900	94000	75400	98500	79400
1000	65700	90000	73100	100000	77600	104500	81600	108500
1250	92500	119800	99950	129000	104450	133500	108450	137500
1600	98000	128900	103300	133800	107800	138300	111800	142300
2000	113000	148900	-	-	-	-	-	-
2500	130900	172200	-	-	-	-	-	-

*Add Rs. 4600/- for LMZ7 with EF

#Voltage Ratings

Shunt trip release	110/220/415V AC	24/110V DC
Undervoltage release	220/415V AC	
Closing coil	110/220 AC	24/110/220V DC
Motor mechanism	110/220 AC	110/220V DC

Notes:

1. Rear horizontal terminals are standard
2. For other terminal options, please contact our nearest sales office
3. 3 pole ACB requires '6' nos of terminals and 4 poles ACB requires '8' nos of terminals for incoming and outgoing
4. In case of combination of terminals, deduct the Buy Log of horizontal terminals and add the Buy Log of selected terminal option for incoming and outgoing separately
5. For codes not available in the Buy Log, please contact our nearest sales office
6. Local controls (ON/OFF push buttons) interlocking is a standard offering with Spectronic ACB (Pad Lock not supplied)
7. For 5000A/6300A ACBs, please contact our nearest sales office

RMS 10 protection release (GTU-D)

- Wide range of O/L, S/C & EF settings
- Current metering with backlit display as standard
- RELT (optional)
- Ease of settings with touch buttons
- Wide range of rating plugs
- Last 10 trip data history

Releases and Accessories

Description	Buy Log/ Unit
RMS releases with current parameters and communication	on request
RMS releases with current, voltage, power parameters and communication	on request
Reduction for LMZ release	5500
Shunt release	2800
Undervoltage release	3300
Castle lock kit (Single letter-19mm)	2200
Castle lock kit (Single letter - 37mm dia)	2200
Castle lock kit (Double letter - 37mm dia)	3400
Ronnis lock for OFF interlock	2200
Ronnis lock for withdrawn / connected position	2200
Auxiliary contact 1NO+1NC	850
6Way LT disconnects block fixed / moving	1400
3Way LT disconnects block fixed / moving	700
Microswitch for common fault indication	1500
Distinct fault indication for O/L,S/C, E/F in LMZ7	4500
Distinct fault indication for O/L,S/C in RMS7 release	4900
Distinct fault indication for O/L,S/C,E/F in RMS7 release	5400
Rating plug for RMS7 without earth fault	3400
Rating plug for RMS7 with earth fault	6600
Motor for MWS mechanism(V)	35700
Closing coil(V)	7200
IMS to MWS conversion kit**	48500

**Motor, closing coil, shunt trip release & MWS wiring harness



Miniature Circuit Breaker

Guardline MCB

- Ref. standards - IS 8828 / IEC 898
- 0.5A-63A in 1 pole, 2 pole, 3 pole+N, 4 pole configuration
- 10kA breaking capacity for entire range
- Current limiting - Class 3
- Tripping curves: C & D for application specific selection
- 80A-125A 1 pole, 2 pole, 3 pole, 4 pole on request
- B type available on request
- Guardline DC MCB 1 pole, 2 pole available on request



Residual Current Circuit Breaker

RCCB

- Type AC - General application
- Type A - For harmonic rich environment
- 6A - 63A, 2 pole & 4 pole, 240V/415V AC
- Sensitivity 30mA, 100mA, 300mA
- Can be used as main switch / isolator



RCBO - RCCB with Overload Protection

- 6A - 63A in 2 pole and 4 pole
- Sensitivity.. 30mA, 300mA C curve
- Breaking capacity - 10kA approved
- Available on request

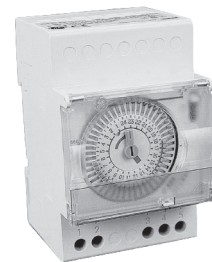
MCB Distribution Boards

- Wide range designed to suit every application & ambience
- Liberal wiring space
- **Safeline Range Sheet Steel DBS**
SPN & TPN DB in 4,8,12 ways in single door & double door configuration
- **Phase Segregated Compartmentalized DBS**
Single door & double door. **4,6,8 & 12 ways**
- **Plug & Socket Distribution Boards**
20 A SPN Plug & Socket DB
30 A SPN Plug & Socket DB



Time Switches

- Auto switching device operating on real time
- Wide range of switches for day, week, day+week, year program
- Synchronous, quartz & digital type with min. switching time of 1sec.
- Profile matching with MCBs, DIN channel mounting, can be fitted in any DB
- Easily programmable



Comfort Functions

- Wide range of DIN channel mounting products
- Profile matching with MCBs, can be fitted in any DB
 - Modular switches 16A,32A
 - Push-buttons 16A
 - Mains disconnect switch 32A-100A
 - Modular switches 63A-80A-100A
 - Day/night contactors
 - Modular contactors
 - Impulse switches
 - Modular relays
 - Light sensitivity switch
 - Staircase lighting time switch
 - Time relays
 - Bell transformers
 - Socket-outlets measurement device - Analogue and digital
 - Net analyser
 - Hour counters surge arresters
 - Thermostats
 - Tariff time switches



Miniature Circuit Breakers - Guardline

MCBs	Buy Log/ Unit	
Configuration	Rating	
SP 'B' Curve	6A-32A	177 ■
	40A	380
SP 'C' Curve	0.5A-4A	290
	6A-32A	195 ■
	40A	400
	50A,63A	425
DP 'C' Curve	0.5A - 4A	780
	6A - 32A	580 ■
	40A	910
	50A, 63A	940
TP 'C' Curve	0.5A - 4A	1205
	6A - 32A	920
	40A	1350
	50A, 63A	1410
FP 'C' Curve	0.5A - 4A	1530
	6A - 32A	1260
	40A	1830
	50A, 63A	1870

For 'D' curve and DC MCBs, please contact us

Isolators

Configuration	Rating/Description	Buy Log/Unit
DP	Guardline Isolator 2 Pole 40A	355
DP	Guardline Isolator 2 Pole 63A	460
TP	Guardline Isolator 3 Pole 40A	600
TP	Guardline Isolator 3 Pole 63A	695
FP	Guardline Isolator 4 Pole 40A	790
FP	Guardline Isolator 4 Pole 63A	850

Distribution Boards

Sheet Steel (Safe Line - Single Door)

Configuration	Buy Log/ Unit
SPN 4 Way	760
SPN 8 Way	920
SPN 12 Way	1090
TPN 4 Way	1850
TPN 8 Way	2700
TPN 12 Way	4000

Phase Segregated Sheet Steel DBs (Single Door)

Configuration	Buy Log/Unit
4 Way	5450
6 Way	6050
8 Way	6450
12 Way	7450

Ordering Code	
While ordering please specify the code as below.	
Curve* (B, C, D)	GL --- Current Rating (0.5A-00, 1A-01, 2A-02, 63A-63)
No. of Poles (1 - SP, 2 - DP, 3 - TP, 4 - FP)	
Example: 4P, 25A, C Curve Code: GLCFP25	

* 'B' curve available in SP configuration 6A - 40A only



Residual Current Circuit Breaker - RCCB

Rating	Poles	Sensitivity (mA)	Buy Log/ Unit	
			Volt	Amps
240V/ 415V AC	25	4	30	2750
	40	4	30	2800 ■
	63	4	30	3250 ■
	25	4	100	2800
	40	4	100	2900 ■
	63	4	100	3375 ■
	25	4	300	2900 ■
	40	4	300	2950 ■
240V# AC	63	4	300	3400 ■
	25	2	30	2090 ■
	40	2	30	2455 ■
	63	2	30	2815 ■
	25	2	100	2160 ■
	40	2	100	2550 ■
	63	2	100	2960
	25	2	300	2165
	40	2	300	2590
	63	2	300	3000

All 2 pole RCCBs are in 4 module size

Sheet Steel (Safe Line - Double Door)

Configuration	Buy Log/ Unit
SPN 4 Way	1075
SPN 8 Way	1290
SPN 12 Way	1520
TPN 4 Way	2500
TPN 8 Way	3700
TPN 12 Way	5400

Phase Segregated Sheet Steel DBs (Double Door)

Configuration	Buy Log/Unit
4 Way	6100
6 Way	6750
8 Way	7650
12 Way	9600

Plug & Socket DB

Configuration	Buy Log/Unit
P & S SPN 20A	1025
P & S TPN 20A	1975
P & S TPN 32A	2200

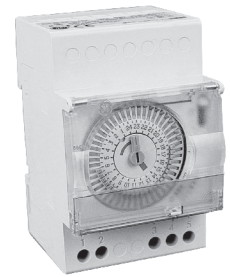
Notes:

- The DB's Buy Logs are inclusive of neutral & earth Bar



Time Switches

Description	Model	Code Reference	Buy Log/ Unit
Electro - Mechanical - Classic			
Day program w/o reserve 30min	Talento 111	666112	2580
Day program with reserve 15min	72*72 CLS72Q41D	666178	2750
Day program with reserve 30min	Talento 211	666104	3200
Week program with reserve 3 hrs	Talento 271	666109	4450
1 Day, 1Week program with reserve 30min/3hrs	Talento 202	666108	8500
2 Day program with reserve 30min/30min	Talento 212	666103	8500
Digital - Galax			
Day / Week program with reserve 30min	Talento 371	686532	5850
Day / Week program with reserve 30min	Talento 371mini	686530	7950
Day / Week program with reserve (2c/o)	Talento 372	686533	10450



Surgeguard - Surge Arresters

Code Reference	Description	I _{max}	U _p (L-PE)	U _n	Buy Log/ Unit
CLASS 2 - Single Pole Plug-in- Plug & Base					
666545	SP Plug in type surge arrester, 20S2	20kA	960V	230V	3350
666546	SP Plug in type surge arrester, 20S4	20kA	150V	400V	3800
666547	SP Plug in type surge arrester, 45S2	45kA	1000V	230V	4700
666548	SP Plug in type surge arrester, 45S4	45kA	2100V	400V	4950
666549	SP Plug in type surge arrester, 65S2	65kA	1200V	230V	8100
666551	SP Plug in type surge arrester, 65S4	65kA	1950V	400V	6500
666537	SP Plug in type surge arrester, with 1C/O, 45C2	45kA	1000V	230V	5450
666539	SP Plug in type surge arrester, with 1C/O, 45C4	45kA	2100V	400V	5450
666542	SP Plug in type surge arrester, with 1C/O, 65C2	65kA	1200V	230V	7100
666544	SP Plug in type surge arrester, with 1C/O, 65C4	65kA	1950V	400V	7850
CLASS 2 - Multi Pole monoblock					
666525	DP (1+N) monoblock surge arrester, 20S2	20kA	960V	230V	5000
666526	FP (3+N) monoblock surge arrester, 20S4	20kA	960V	400V	6200
666527	DP (1+N) monoblock surge arrester, 45S2	45kA	1000V	230V	6500
666529	FP (3+N) monoblock surge arrester, 45S4	45kA	1000V	400V	9450
666530	FP (3+N) monoblock surge arrester, with 1C/O, 45C4	45kA	1000V	400V	12800
666533	FP (3+N) monoblock surge arrester, with 1C/O, 80C4	80kA	1200V	400V	29200
CLASS 2 - Replacement module (Cartridge only)					
666534	Cartridge for 666545	20kA	960V	230V	3150
666535	Cartridge for 666546	20kA	150V	230V	3350
666536	Cartridge for 666547	45kA	1000V	230V	2850
666538	Cartridge for 666548 & 666539	45kA	2100V	400V	2850
666541	Cartridge for 666542 & 666549	65kA	1200V	230V	4400
666543	Cartridge for 666544 & 666551	65kA	1950V	400V	4400
666524	Sine wave tracker		-	-	7250
666532	Decoupling coil 40A		-	-	6500



Overhead Busbars and Plug-In Box

Overhead Busbars (OHBB)

- Type RR overhead busbar units offer highly flexible power distribution system to meet complex shop layouts
- 200A to 400A OHBB, standard units of 3658mm and 2440mm long respectively
- Busbars are supported by fire retardant phenolic moulds
- Complete safety with fully shrouded plug-in points at specific intervals
- Extended range of 200A to 800A in copper & 630A to 800A in aluminium OHBB also available on request

Plug-in Box

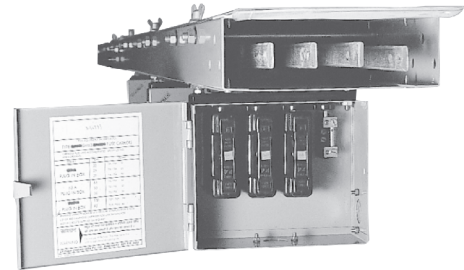
- For direct plugging into OHBB
- 32A, 63A and 100A TPN plug in boxes with HBC fuselinks for flexibility in power distribution (with MCCB/provision for MCB, on request)
- Contacts reinforced by spring steel strips for proper contact with busbars
- Two earth pins located at the ends engage first in the special earth bushes before the main contacts make

Tap Off Box

- Available in 63A to 630A with SDFUs/MCCBs. Please contact our nearest sales office for detailed information

Incomer Housing with MCCB

- Available in 400A and 630A as standard design. Please contact our nearest sales office for detailed information



WavePro™ Series Busway (OHBBs & Rising Mains) Busways

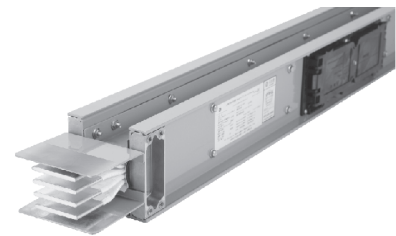
- Highly flexible solution for complex power distribution requirements of medium to large size commercial buildings and industries
- Compact design, sandwich construction. KEMA certified, conforms to IEC standards
- Housing made up of aluminium alloy. Available in plug-in & feeder versions
- Range: 100A - 5000A, 3P4W, 3P5W, IP40 - IP65 configurations. Short circuit ratings from 36kA - 100kA (for various ratings)
- Standard length of the busway is 3mts. Non standard sections on request
- Standard length plug-in busway can be provided with upto 8 plugs per length (8 plugs standard offering)

Busway Plugs

- Available with MCCBs - with rotary handle or crank handle (metal handle on the sides)
- Both the versions offer interlock, preventing the opening of the door when the device is "ON", preventing pulling out of the plug when the device is "ON"
- Three basic frame sizes, 125A (16A - 125A), 250A (160A - 250A), 630A (320A - 630A)

Busway Fittings

- Complete range of accessories to suit site conditions
- Elbows (Right, Left, Up, Down), Tees, Cable Tap Boxes (End, Center), Expansion Lengths, End Boxes etc...



Overhead Busbar

Rating	Material	Buy Log/ Unit
200A	Aluminium	For details, please contact our nearest sales office
400A	Aluminium	
630A	Aluminium	
800A	Aluminium	
200A	Copper	
400A	Copper	
630A	Copper	
800A	Copper	

Plug-in Box

Rating		Config-uration	List No.	Code Reference	Buy Log/ Unit (excluding Fuselinks)	Recommended HBC Fuselinks
Volt	Amp					Bolted T
415 V AC	32	TPN	RRF303N-4	PGT8215000	3850	A2
	63	TPN	RRF603N-4	PGT8220000	4600	A2
	100	TPN	RRF1003N-4	PGT8225000	7700	A4

Notes:

1. Plug-in boxes with provision for MCBs available on request
2. Tap- Off boxes with SDFUs, MCCBs, and feed units / Incomer housings are available on request



WavePro™ Series Busway Overhead Busbar / Rising Mains

Description	Buy Log/Unit
100A - 5000A busbar system (Plug-in & feeder configurations)	For details, please contact our nearest sales office
Plug in Boxes with MCCB	
Accessories: Elbows, Tees, Offsets, End Tap Boxes, Center Tap Boxes etc.	

Blank End Covers

Rating	Code Reference	Buy Log/Unit
200A	GGT0100007	For details, please contact our nearest sales office
400A	GGT0100008	



Capacitors

- APP and mixed dielectric
- Explosion proof safe design
- Long life
- Low watt loss

Type APP (Film Foil) - 3Ø, 50Hz

KVAR	APP 415 V Code Reference	Buy Log/ Unit	APP 440 V Code Reference	Buy Log/ Unit
5	APP051	3550	APP052	3350
7.5	APP071	5300	APP072	5000
8	APP081	5600	APP082	5350
10	APP101	6750	APP102	6500
12.5	APP121	8500	APP122	8000
15	APP151	10100	APP152	9700
20	APP201	13500	APP202	13200
25	APP251	16800	APP252	16200
30	APP301	20200	APP302	19800

Ge-Povar APFC Relay

Model	No. of Stages	Code Reference	Buy Log/Unit
PC06	6	PC0610	15900
PC08	8	PC0810	19900
PA12	12	PA1210	24900
PA14	14	PA1410	28800

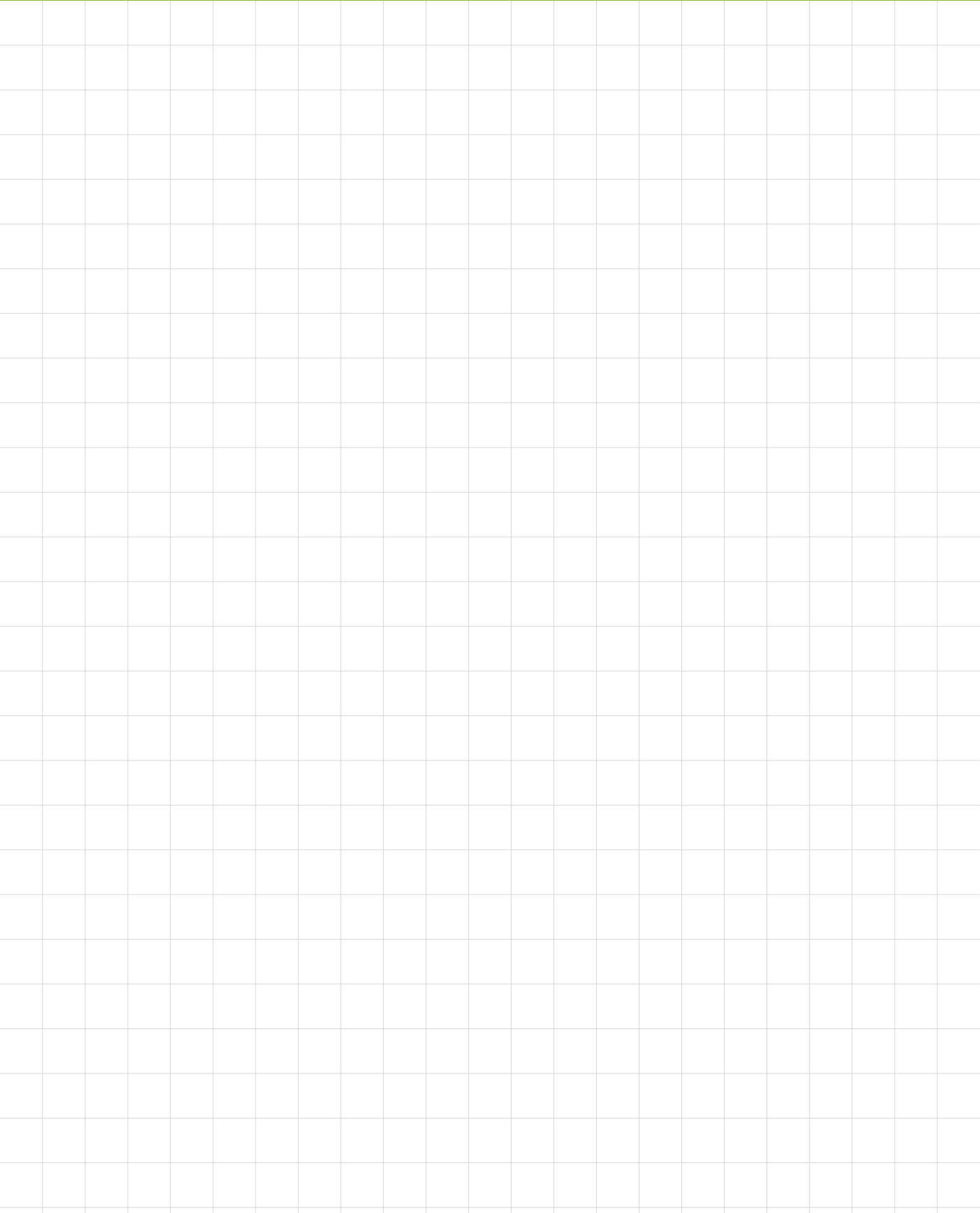
Banking

- AI 80 per KVAR
- Cul 100 per KVAR

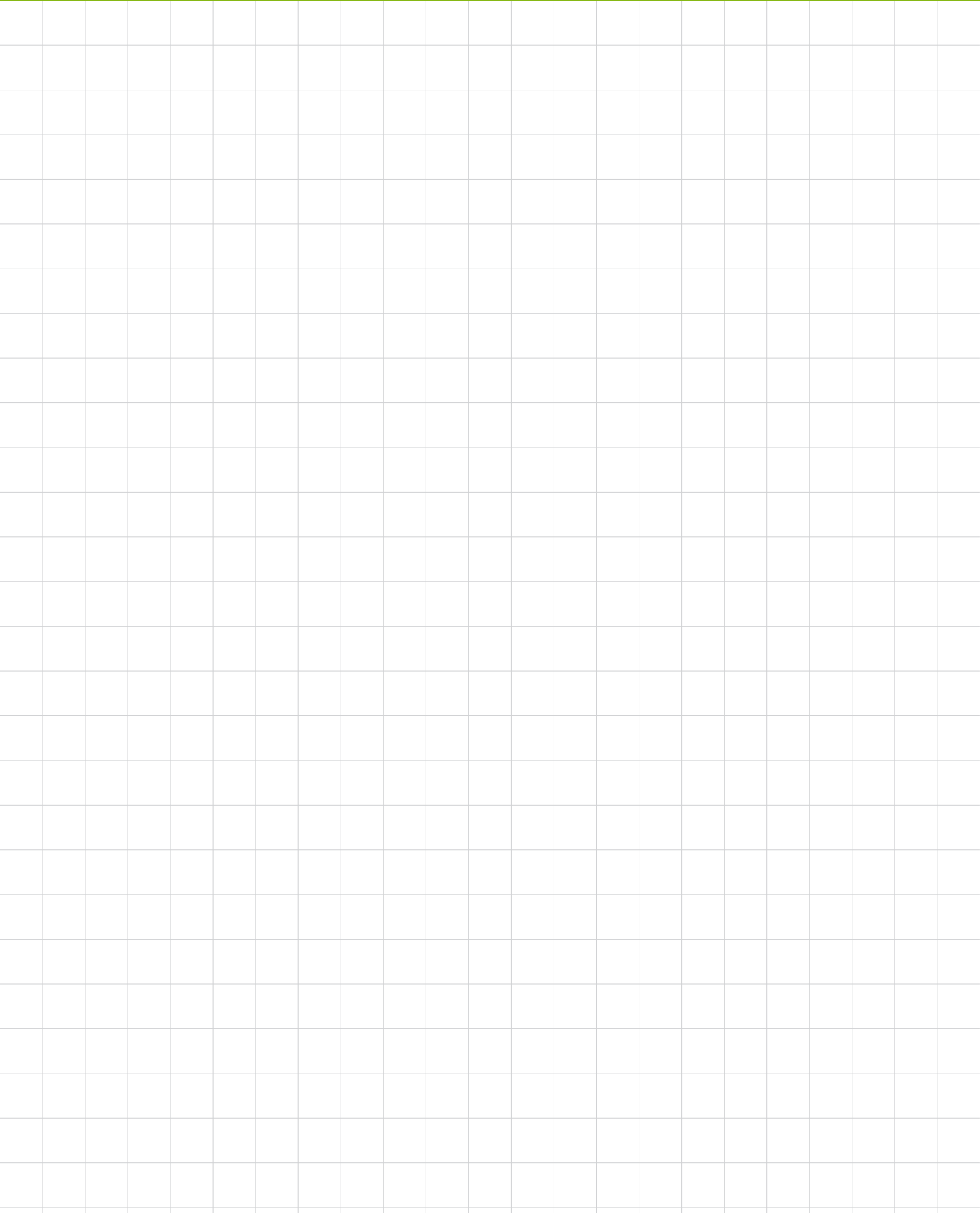
Notes: Capacitor in other voltages, KVAR & frequency available on request



Notes



Notes



Authorised Service Franchisee

DELHI

Delhi ACB Service Centre

House No. 156, Amit Chand Khan,
Giri Nagar, Kalkaji,
New Delhi-110019.
Mr. M.D Abdul, Mr. Tauseef Ahmed -
9811129159, 9811385247
Email: tauseef.acb@indiatimes.com

Super Electrical Company

NE - 9, Vishnu Garden,
New Delhi-110018.
Mr. Kuldeep - 9810111244
Email: superelectricalco@yahoo.co.in

Master Engineering Services

20/7, Chhoti Subzi Mandi,
Janakpuri, New Delhi-110058.
Mr. Bhushan - 9811262378
Email: master_engservices@yahoo.com

GURGAON

P.C. Customer Service Centre

Shop No.12, Kamla Place,
Near Federal Bank, Gurgaon,
Haryana-122001.
Mr. P.C. Prakash - 0124-4063870,
9810957870 Email:
pccustomerservicecentre@yahoo.com,
pcprakashpc@yahoo.com

KANPUR

Nanda Electrical Enterprises

122/1, B-5, Kabari Market,
Sarajini Nagar, Kanpur-208012.
Mr. Nanda - 9935543215
Email: knpnanda@sancharnet.in

LUDHIANA

GTB Engineers

2584, Street No.1,
B/S Bharat Petroleum, Gill Road,
Janta Nagar, Ludhiana,
Punjab-141003.
Mr. Dhir Singh Saran,
Mr. Satvinder Singh - 9855623213
Email: gtb_engineers@rediffmail.com

BHILWARA

Dynamic Elecpower Pvt. Ltd.

G-68, Rico Industrial Area,
Biliya, Bhilwara-311001.
Mr. Sanjeev Lodha, Mr. R.K. Tilak -
01482-260067, 01482-260142,
9414115151, 9413356066
Email: dynamic.elecpower@gmail.com

HARYANA

M/s Vaishno Enterprises

Shop No: 288, 1st Floor,
Haripur, Sector 4, Panchkulla,
Haryana-134109.
Mr. Rajeev Vaid - 9810216819
Email: vaishno.entpr@yahoo.com

JAIPUR

M/s Delhi ACB Service Center

S-5, Rani Piazza, Ramnagar,
Shastri Nagar, Jaipur-302016.
Mr. Tauseef Ahmed - 9811129159,
9811385247
Email: tauseef.acb@indiatimes.com

KOLKATA

Allied Engineering

53B/1A, Gorcha Road,
Kolkata-700 019.
Mr. Achintya Kr. Ghosh, Mr. Pandey -
033-24617468, 9831270508,
9433795088
Email: achintaghosh@yahoo.co.in

Edison Services

P-162, Oxy Town,
Biren Roy Road (W),
Kolkata-700061.
Mr. Jayanta Sankar Dasgupta -
033-24476514, 9433241310
Email: edison_services@indiatimes.com

DURGAPUR

Real Control

Dr. Zakirul Hussain Avenue,
Durgapur-713206.
Mr. Molay Mondal, Sukanta Mondal-
0343-2557395, 09434010569,
09434051823
Email: malaymondaldgp@gmail.com

ORISSA

Pooja Sales Corporation

A32/210, 2nd Floor,
1st Lane Simlipada,
Angul-759122.
Mr. Vikash Agarwal-06764-233940,
9437069957
Email: psp_l_vk@rediffmail.com

IDEAS & Installation

238, Shanti Nagar, Jharpada,
Bhubaneswar-751006.
Mr. Nihar Panda, Tapas Ponda -
9861040136, 09861683408
Email: nihar_ic@yahoo.com

ASSAM

Raj Electricals

G. S. Road, Bangagarh,
Guwahati-781005.
Mr. Sushil Rajbangshi -
0361-527847, 9864034140
Email: sushilrajbangshi@sify.com

CHATTISGARH

Techno Enterprises

6B, Nandini Road,
Power Bhilai-490011.
Mr. Shyam Maheswari,
Mr. RP Maheswari - 0771-2226970,
9329100861, 9329022810
Email: technoent2001@gmail.com

JAMSHEDPUR

M/s Alcalab Pvt. Ltd.

311-316, Ashiana Trade Center,
Adityapur, Jamshedpur-831013.
Mr. Jatinder Singh Dugal -
0657 - 3204115, 6536849
Email: alcalab@sify.com

MUMBAI

M/s Konkani Electric Corpn (N.M)

Plot No. 60, Sector - 23,
CIDCO Industrial Estate,
Turbhe, Navi Mumbai-400 705.
Mr. J.K. Shah, Mr. Nimit Shah -
022 - 27832165, 27832501,
9323381796
Email: konkanelec@rediffmail.com

VAPI

M/s VIJ Electricals & Services

208, Deepmala Co-Ho Society,
Hariya Park, Vapi Silvassa Road,
Vapi (E)-396 195.
Mr. Pramod Patil - 9824113302
Email: vijelectrical@yahoo.com

NAGPUR

M/s Ravi Engineering Services

Plot No. W-22, Hingna Industrial Area,
MIDC, Nagpur-440016.
Mr. Ravi Patil - 9422807882
Email: resrp2004@yahoo.co.in

PUNE

M/s Desh Electricals & Mktg

No. 3 & 4, 1st Floor, Saptasungi,
Apartments, 1511B, Sadashiv Peth,
Pune-411 030.
Mr. P.G. Deshpande - 020 - 24465843,
9822751788
Email: deshelect@gmail.com

INDORE

M/s Technocom Marketing

A15, Block-3, New Siyaganj,
Indore-452006.
Mr. Mahesh Aggarwal - 0731-2548955,
2541428, 4000034, 9425055626,
9826052721
Email: maheshtechnocom@gmail.com,
techno_com@airtelmail.in

BARODA

M/s Arpan Electricals

P-1, Silver Oak Apartment,
Sharon Park, Behind Ghalini Petrol,
Pump, Nizampura, Baroda-390002.
Mr. Simon - 9638311257
Email: arpanelect2001@yahoo.co.in

AHMEDABAD

M/s Power Sales & Services

31, Modi Estate, Opp Samrat Nagar,
Isanpur, Ahmedabad-382 443.
Mr. Paresh Gajipara - 079 - 2573 6912,
9825013055, 9825054732
Email: powersales_2004@sify.com

NASIK

M/s Jadhav Switchgear Services

F4, Sai Prabhu Society,
Pethenagar Road, Indiranagar,
Nasik-422009. Mr. Madhukar Shankar
Jadhav - 9403697021, 0253-2322460
Email: madhukar@jadhavswitchgear.com

CHENNAI

M/s Chennai Engineering Services

No. 16, 3rd Main Road, CIT Nagar,
Nandanam, Chennai-600 035.
Mr. Krishnamoorthy, Mr. Maran -
(044) - 24310503, 24361140,
9841045610
Email: chennaiengineering@hotmail.com

COCHIN

M/s General Enterprises

5/292, 'Anjilijil', Pishari Kovil Road,
Eroor P O., Tripunithura,
Kochi-682 306.
Mr. Jaikumar, Mr. Ashokan -
(0484) 2775805, 3042884, 9447077580
Email: generalenterprises@hotmail.com

HYDERABAD

M/s Techno Serve Electricals

24-88/49/A1, East Anandbag,
Malkajigiri, Hyderabad-500047,
Mr. K. Srinivas -
TeleFax: (040) 27248142, 9849240771
Email: techno_s@rediffmail.com

COIMBATORE

M/s Chennai Engineering Services

11/25, Bharathi Nagar,
1st Street, S.M. Palayam Road,
G.N. Mills, Coimbatore-641029.
Mr. Krishnamoorthy, Mr. Maran -
(044) 24310503, 24361140,
Fax No. 24361140, 9843081773
Email: chennaiengineering@hotmail.com

MADURAI

M/s Madurai Engineers

Plot No. 230, P.P. Chavadi,
Madurai-625 016.
Mr. Rajkumar - (0452) - 2349500,
9994950101
Email: maduraiengineers@rediffmail.com

VISAKHAPATNAM

M/s Techno Serve Electricals

#27-3-98, Near Kanithi Road,
Srinagar Colony, Gajuwaka,
Visakhapatnam-530026.
Mr. Phannikrishnan -
TeleFax- (040) - 2728142,
9849254623
Email: techno_k@rediffmail.com

BANGALORE

M/s Power Solutions

847, 5th Cross, 2nd Stage,
10th Main, Indranagar,
Bangalore-560038.
Mr. N. Suresh - (080) -25254652,
9900269919
Email: powersolution@yahoo.com

M/s S D Electricals

#15/2, Hegganahalli, Main Road,
Opposite I O Petrol Bunk,
Near Mohan Theatre, Sunkadkatte,
Bangalore-560091.
M. Srinivaskumar - 9972104618,
9620193477
Email: srinivas_ceblr@yahoo.co.in

REGIONAL OFFICES**BRANCH OFFICES****NORTH****Gurgaon**

GE India Industrial Pvt. Ltd.
5th Floor, Building No.7A
DLF Cyber City, DLF Phase-III
Sector 25 A, Gurgaon
Haryana - 122002
Ph: (0124) 4808000
Fax: (0124) 4226911 / 4226912

Chandigarh

GE India Industrial Pvt. Ltd.
SCO No. 72 & 73, First Floor
Sector 8/C, Madhya Marg
Chandigarh-160008
Ph: (0172) 3982908-10
Fax: (0172) 3982905

Jaipur

GE India Industrial Pvt. Ltd.
448, 4th Floor, Ganapati Plaza
M.I. Road, Jaipur-302001
Ph: (0141) 5112802
Fax: (0141) 2389012

Lucknow

GE India Industrial Pvt. Ltd.
101, Ace Business Center
19, Vidhan Sabha Marg
Lucknow-226001
Ph: (0522) 3203808, 3012444/666
Fax: (0522) 4045909

SOUTH**Bangalore**

GE India Industrial Pvt. Ltd.
The Millenia, Level-6, Tower B
1 & 2, Murphy Road, Ulsoor
Bangalore-560008
Ph: (080) 41434000
Fax: (080) 41434199

Chennai

GE India Industrial Pvt. Ltd.
Temple Tower, 6th Floor
476, (New No. 672) Anna Salai
Nandanam
Chennai-600035
Ph: (044) 45070470-84
Fax: (044) 45070474

Coimbatore

GE India Industrial Pvt. Ltd.
No.36/6 & 7, 1st Floor
Ashirwad Building
D.B.Road, R.S. Puram
Coimbatore-641002
Ph: (0422) 4393520 / 4393529

Cochin

GE India Industrial Pvt. Ltd.
Mayur Business Center & Motel
Chittur Road, Pullepadi Junction
Cochin-682035
Ph: (0484) 2364139
Fax: (0484) 4031400

Hyderabad

GE India Industrial Pvt. Ltd.
5-2-45, Hyderbasti, RP Road
Near Gujarati High School
Secunderabad-500003
Ph: (040) 27543162, 66311264
Fax: (040) 66339272

WEST**Mumbai**

GE India Industrial Pvt. Ltd.
361/362, Solitaire Corporate Park
M. Vasarji Road, Chakala
Andheri (E), Mumbai-400093
Ph: (022) 40101610
Fax: (022) 40101611

Ahmedabad

GE India Industrial Pvt. Ltd.
405-406, Kirtiman Complex
Kinariwala House, Behind Citibank
Off C.G. Road, Ahmedabad-380006
Ph: (079) 65427385/65427389
Fax: (079) 26460637

Pune

GE Money Financial Services Limited
Shop No. 405-410, 4th Floor
City Point, Dhole Patil Road
Pune-411001
Ph: (020) 41266999
Fax: (020) 41266109

EAST**Kolkata**

GE India Industrial Pvt. Ltd.
Horizon Building, 4th Floor
57, Chowringhee Road
Kolkata-700071
Ph: (033) 40034056
Fax: (033) 40034071

We are committed to continuous development and improvement of our products and the specifications are subject to change without notice. For product availability and latest prices, please contact GE Sales Team.

For any further information, visit us at <http://www.geindustrial.com>



and General Electric are registered trade marks of General Electric Co. USA®

Works:

GE India Industrial Pvt. Ltd.
Plot No. 42/1 & 45/14
Electronic City - Phase II
Bangalore-560100
Ph: (080) 41113000
Fax: (080) 28528469/552

HO:

GE India Industrial Pvt. Ltd.
The Millenia, Level-6, Tower B
1 & 2, Murphy Road, Ulsoor
Bangalore-560008
Ph: (080) 41434000
Fax: (080) 41434199
Email: query@ge.com

Toll Free No:

18001024343

Customer Care:

gecustomer.care@ge.com



GE imagination at work